



ā r ā m a

THE PRIDE OF NEW ALIPORE.
YOUR HOME.



9073 66 55 99

MODERN
PROPERTIES

Project Details:

- Possession June 2028
- Land Area: 23 Cottah
- Tower: 1
- Elevation: B+G+10
- Total Unit: 18
- 2 Passenger & 1 Service Lift
- Bare shell Apartment
- Unit Type:
4 BHK + Servant Quarter
- South Open Apartments
- VRV AC



South Open Apartments



VRV AC



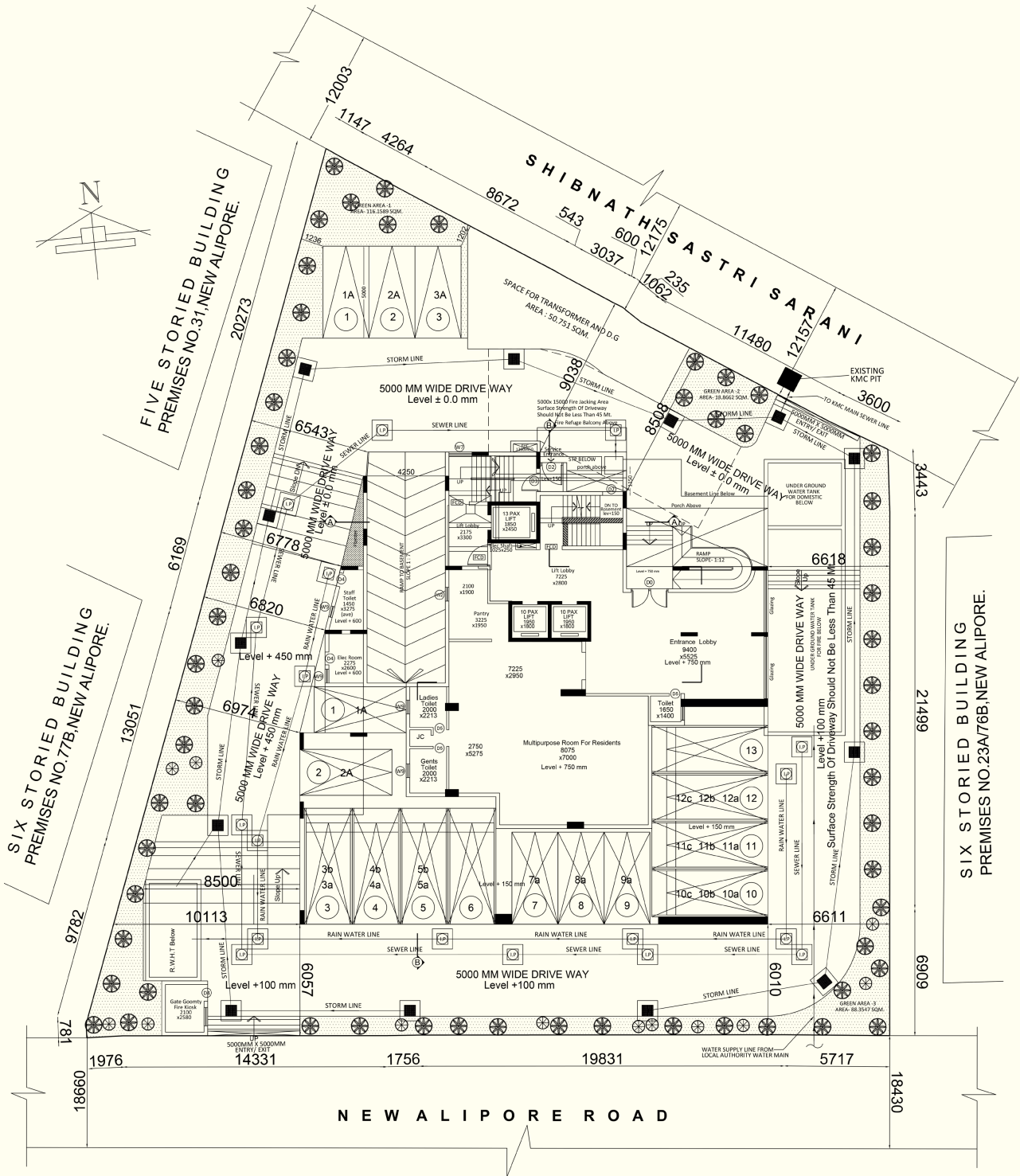
Lift

Representational Images

Amenities:

1. Ground Floor Banquet
2. 1ST Floor Gym
3. Roof-top Swimming Pool
4. Roof-top Deck



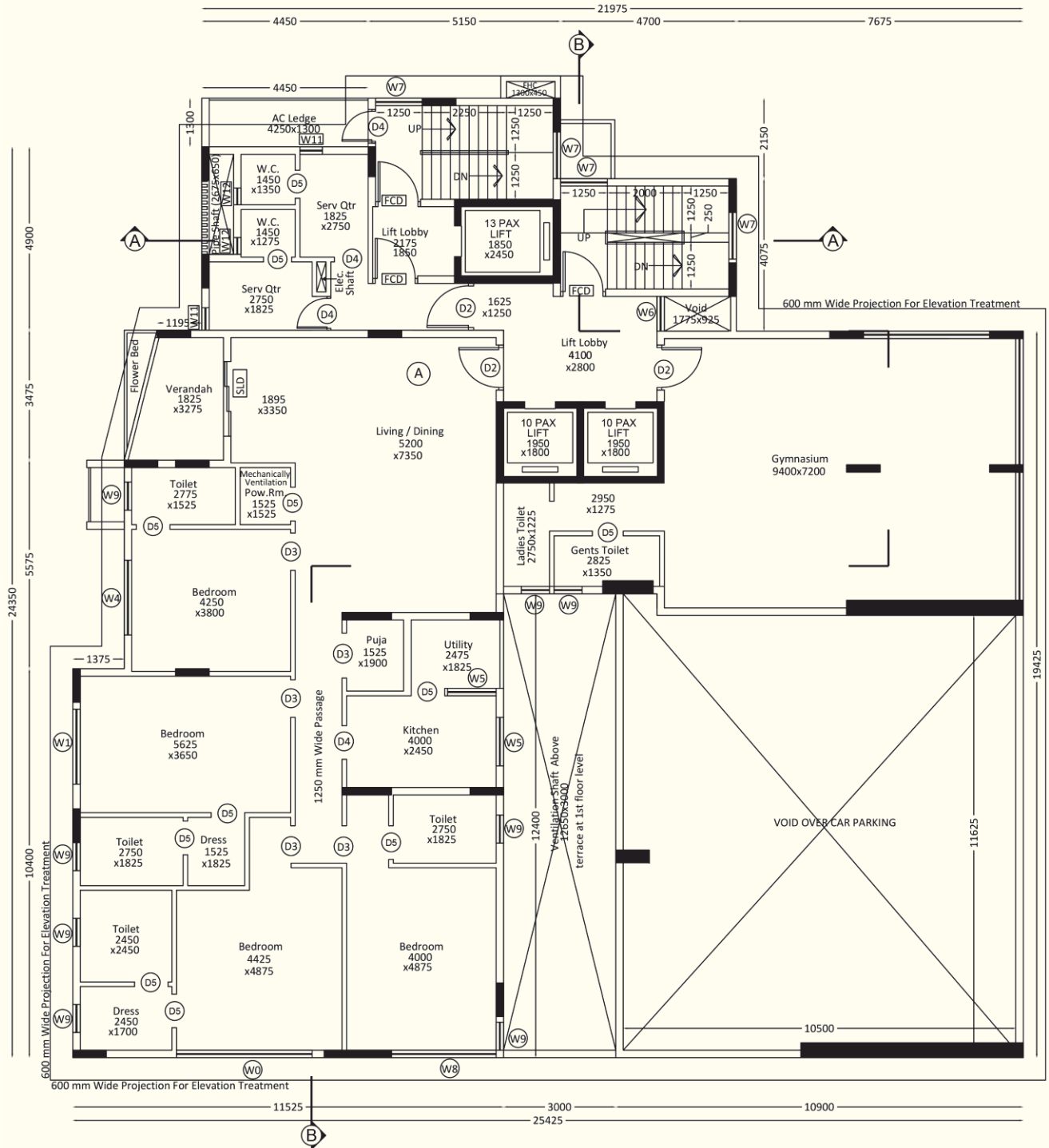


9073 66 55 99

MODERN PROPERTIES

1st Floor Plan

ārāma

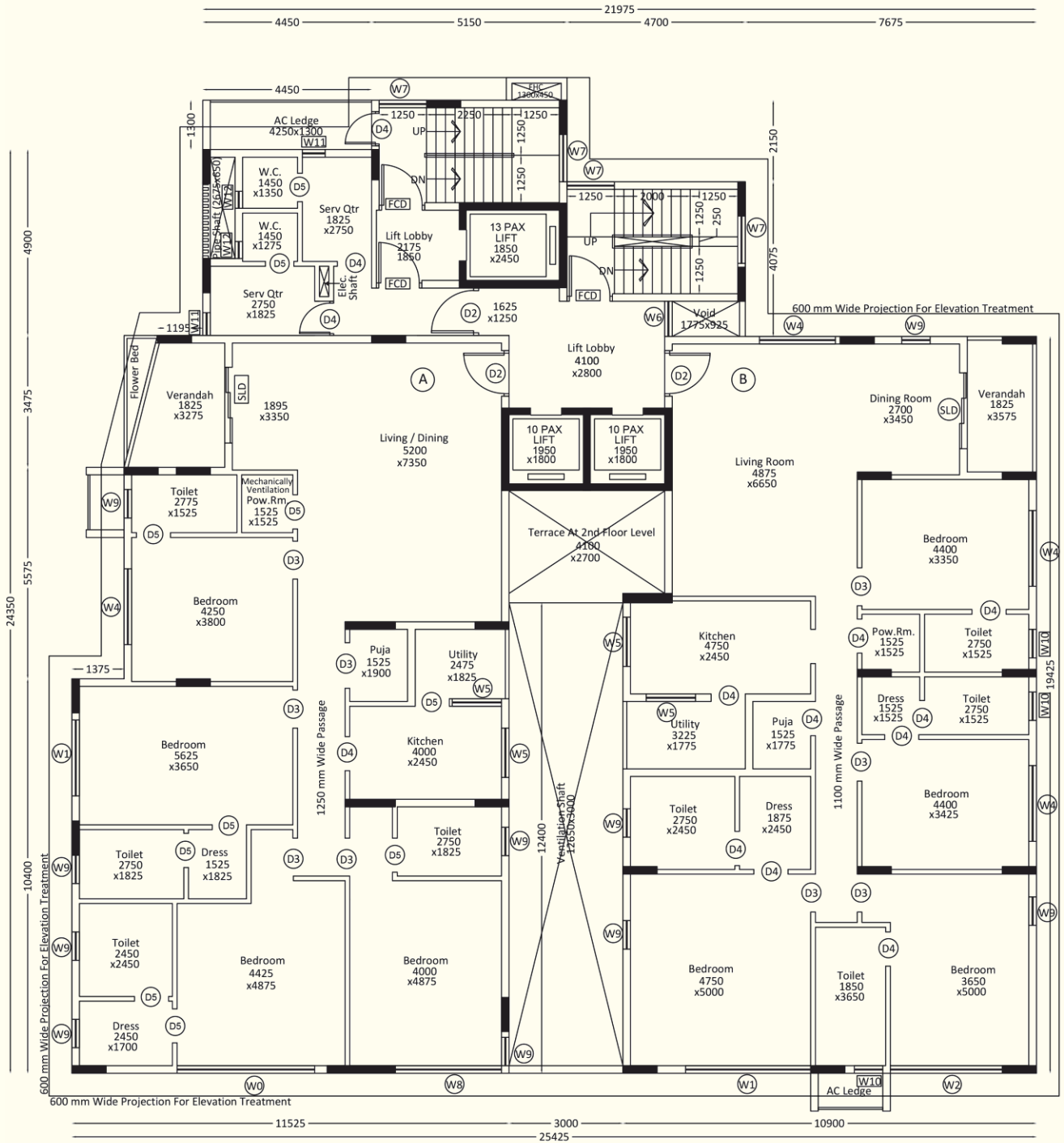


9073 66 55 99

MODRNN
PROPERTIES

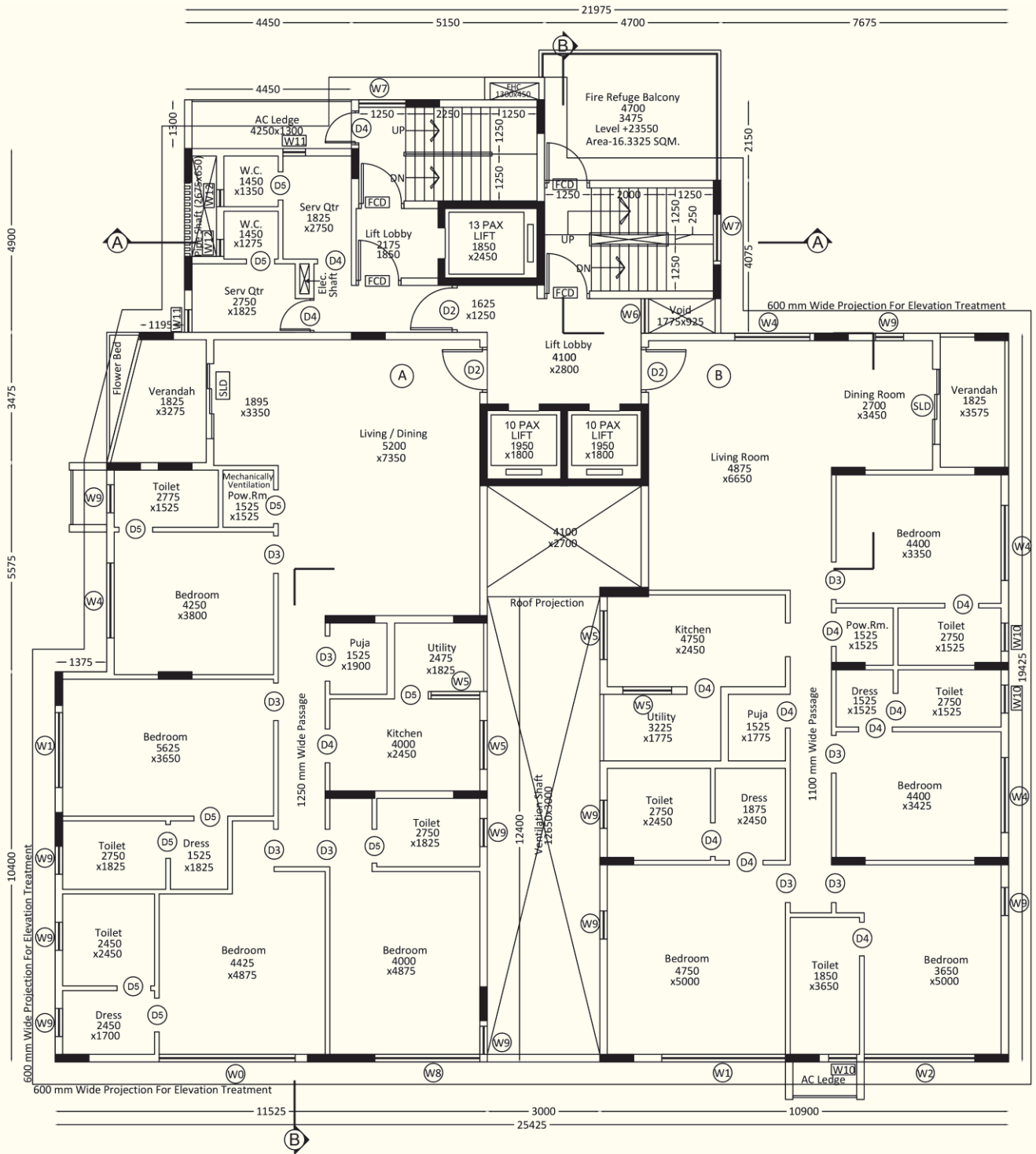
3rd, 5th, 7th & 8th Floor Plan

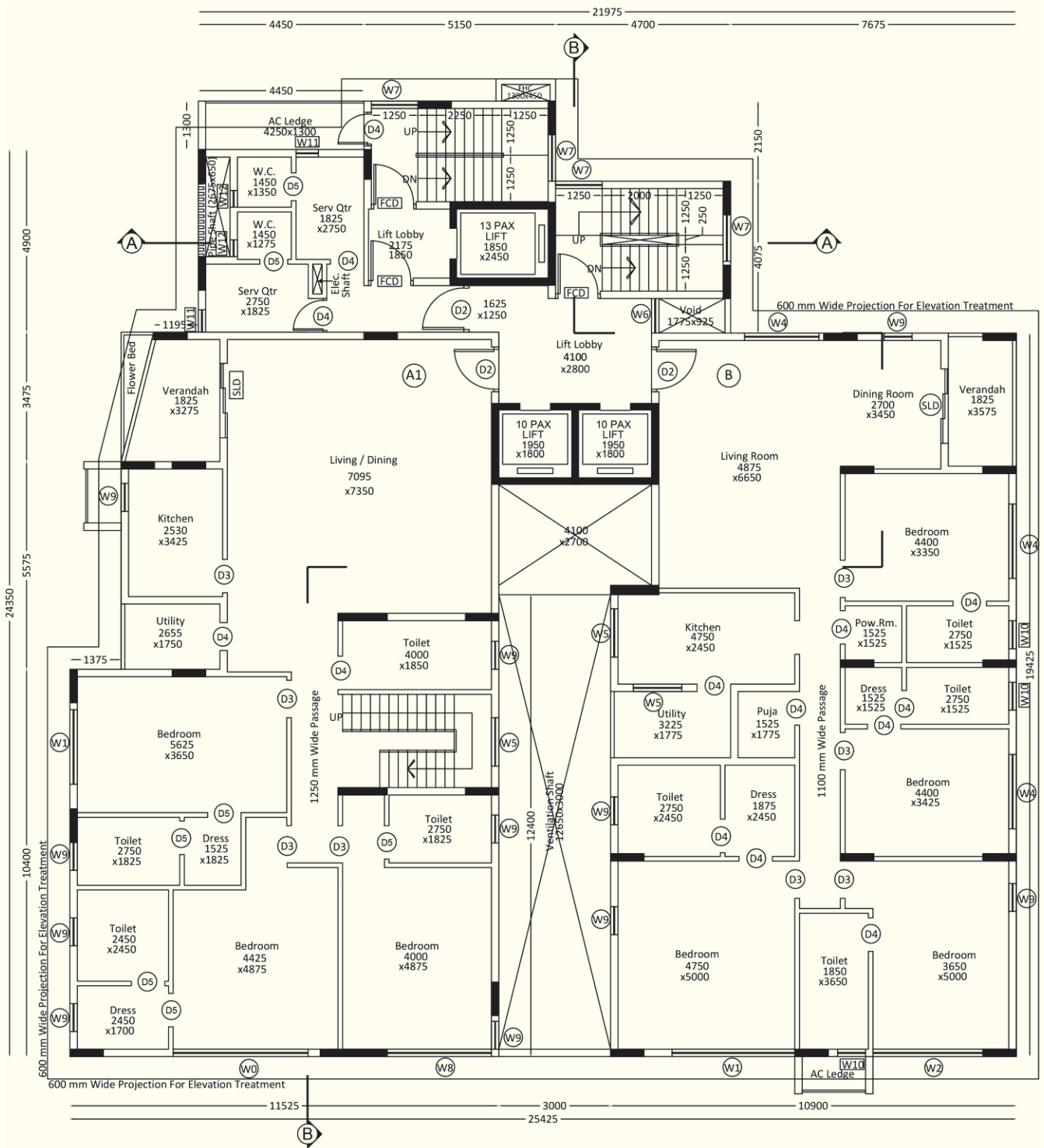
ārāma



9073 66 55 99

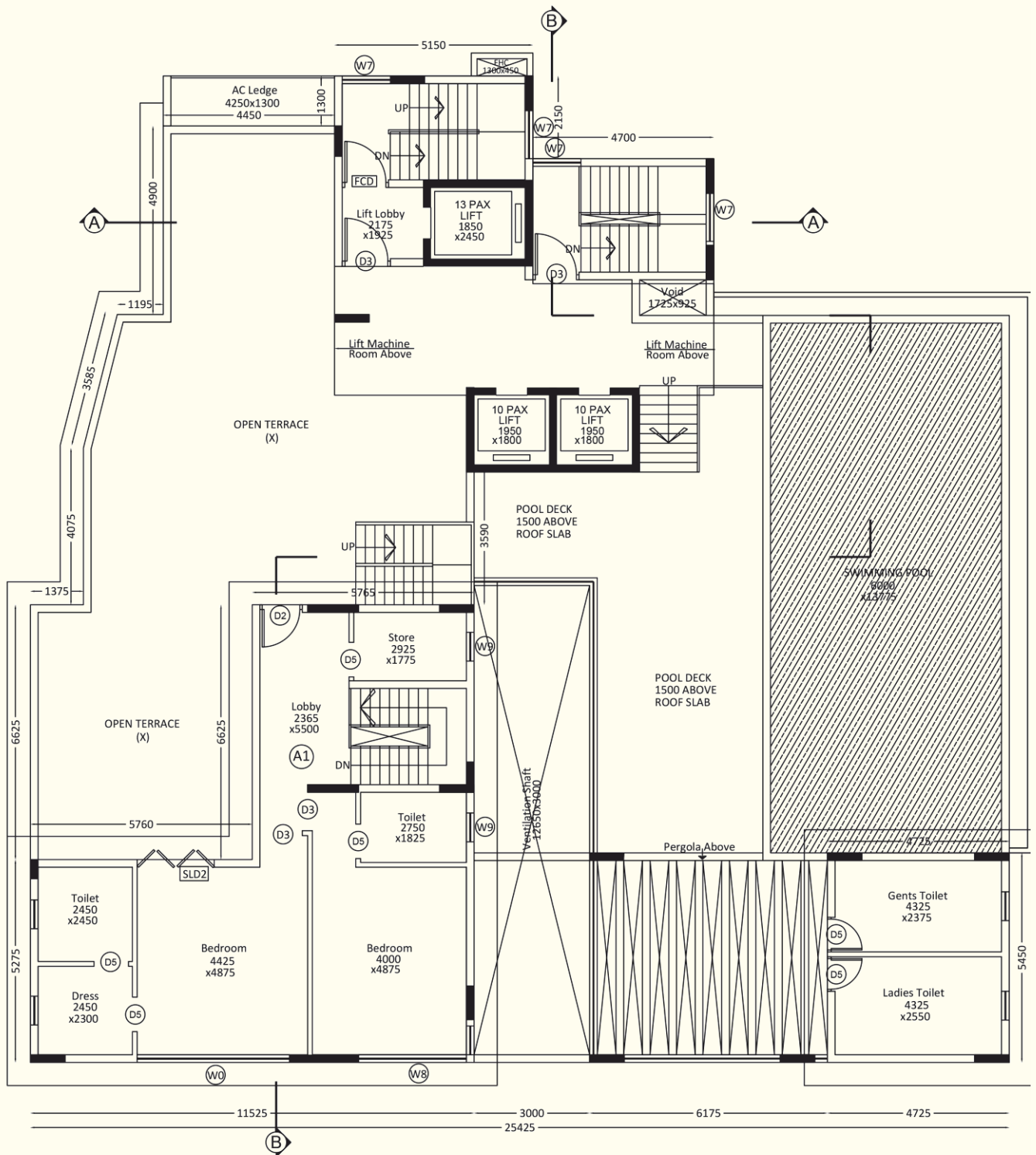
MODERN
PROPERTIES





10th Floor Plan

ārāma



9073 66 55 99

MODERN
PROPERTIES

ā r ā m a

SITE ADDRESS:

29, SHIBNATH SASTRI SARANI, P.S-NEW ALIPORE, KOLKATA - 700053



9073 66 55 99

MODERN
PROPERTIES