

Leventer

O | N | E

PLAN OF SUCCESS



9073 66 55 99

MODERN  
PROPERTIES



9073 66 55 99

MODERN  
PROPERTIES



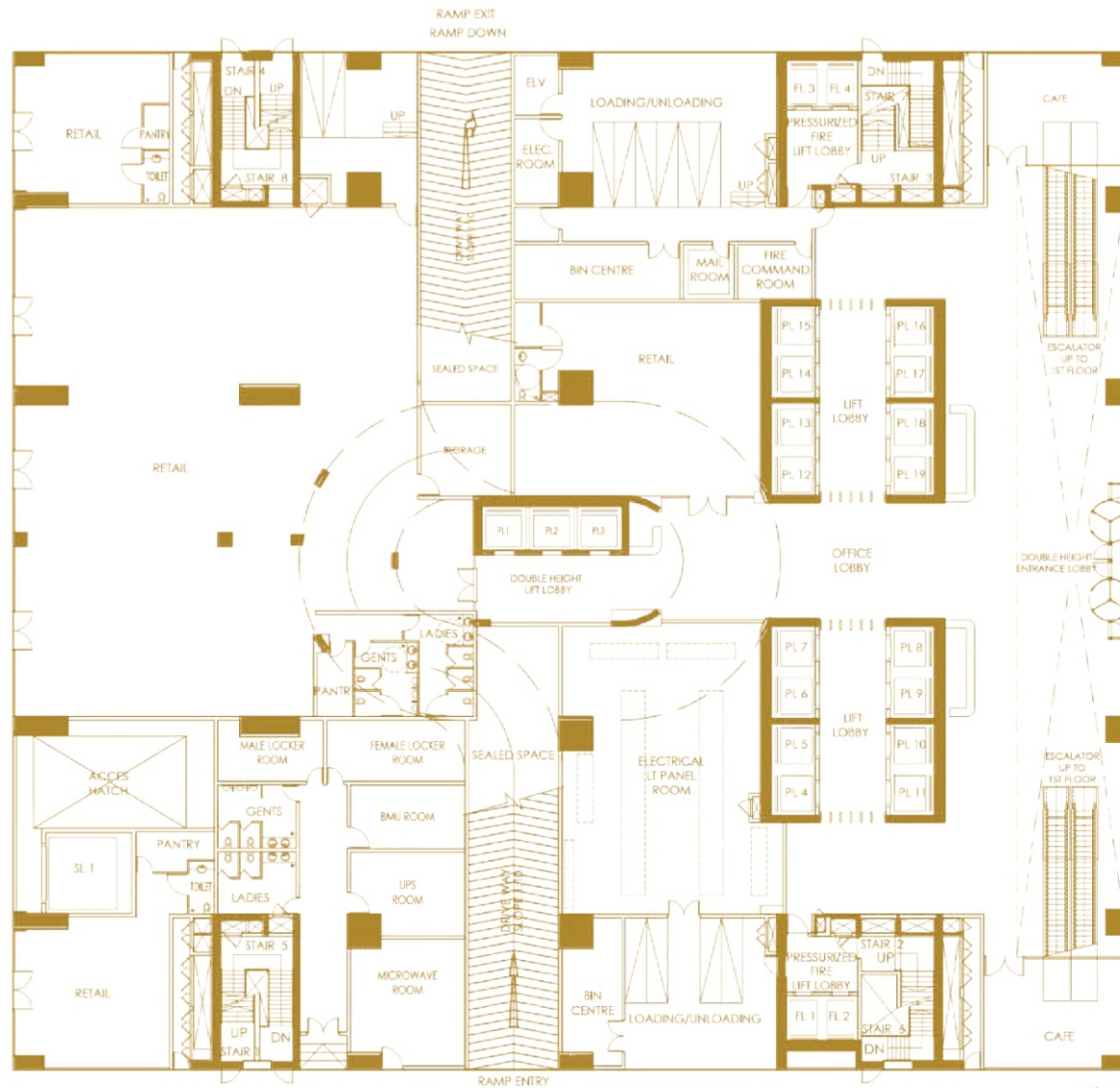
# ONE

NEW ERA  
OF BUSINESS



9073 66 55 99

MODERN  
PROPERTIES

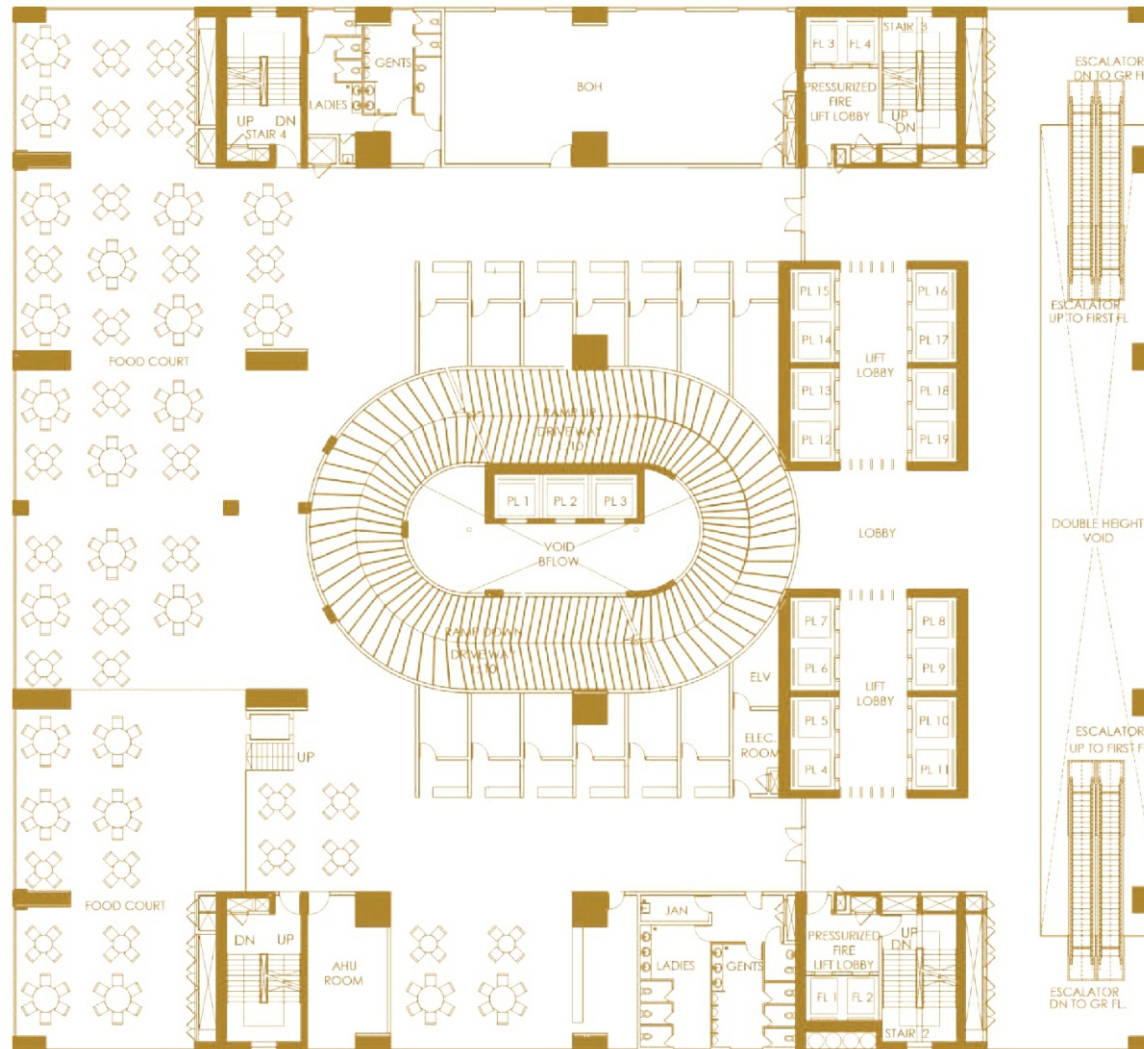


GROUND FLOOR



9073 66 55 99

**MODERN** PROPERTIES

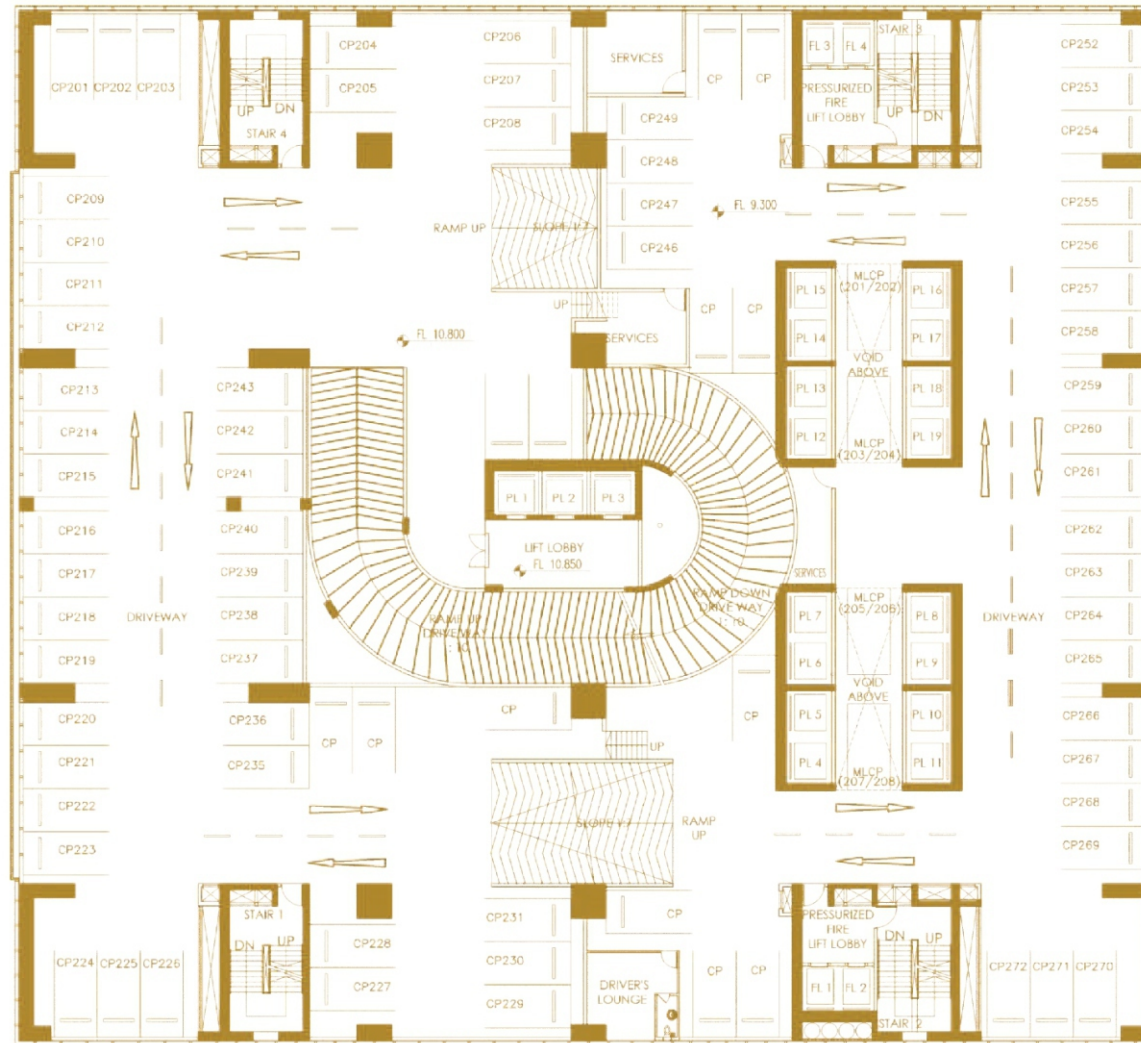


1<sup>ST</sup> FLOOR



9073 66 55 99

**MODERN** PROPERTIES

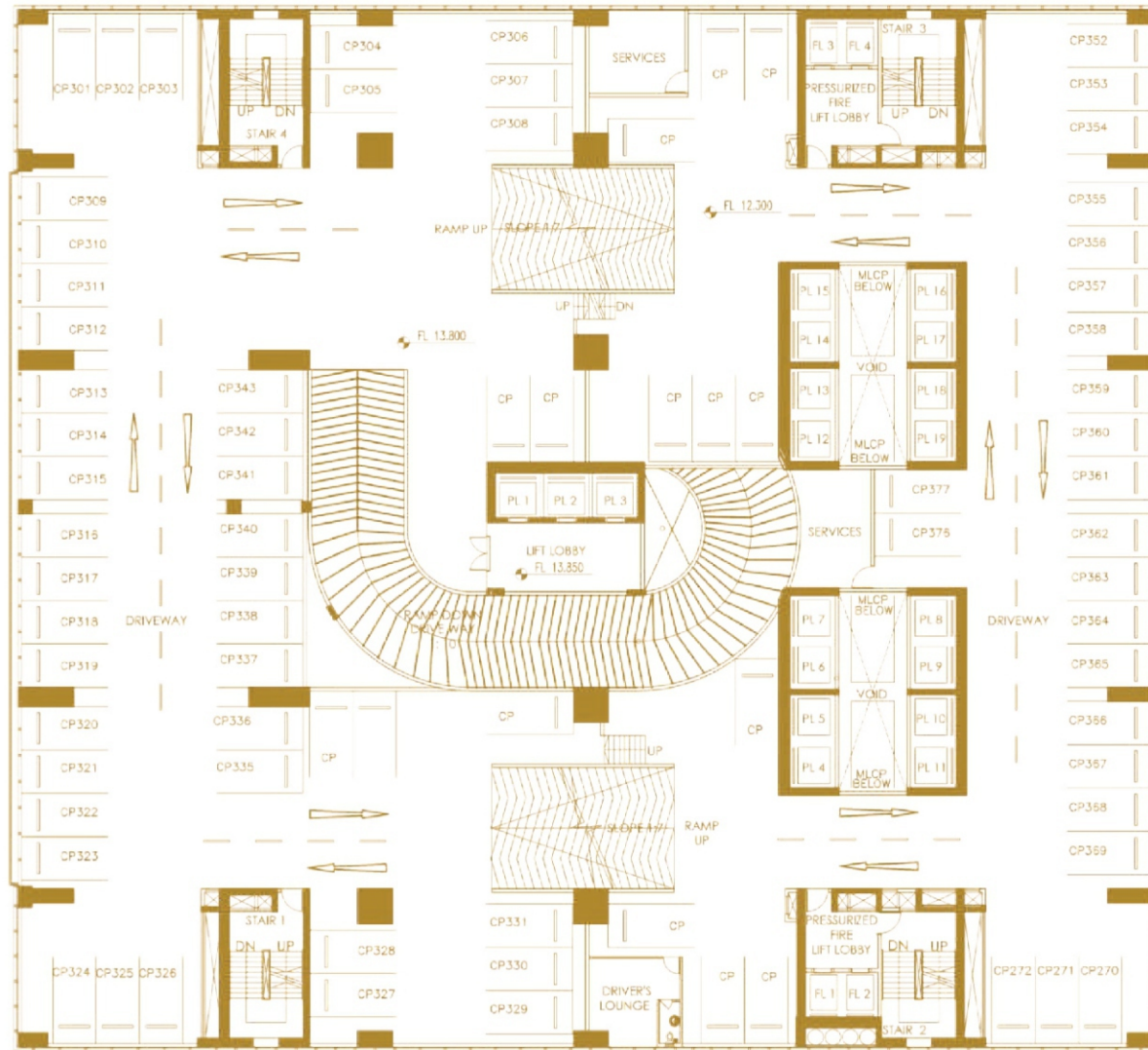


2<sup>ND</sup> FLOOR



9073 66 55 99

**MODERN** PROPERTIES

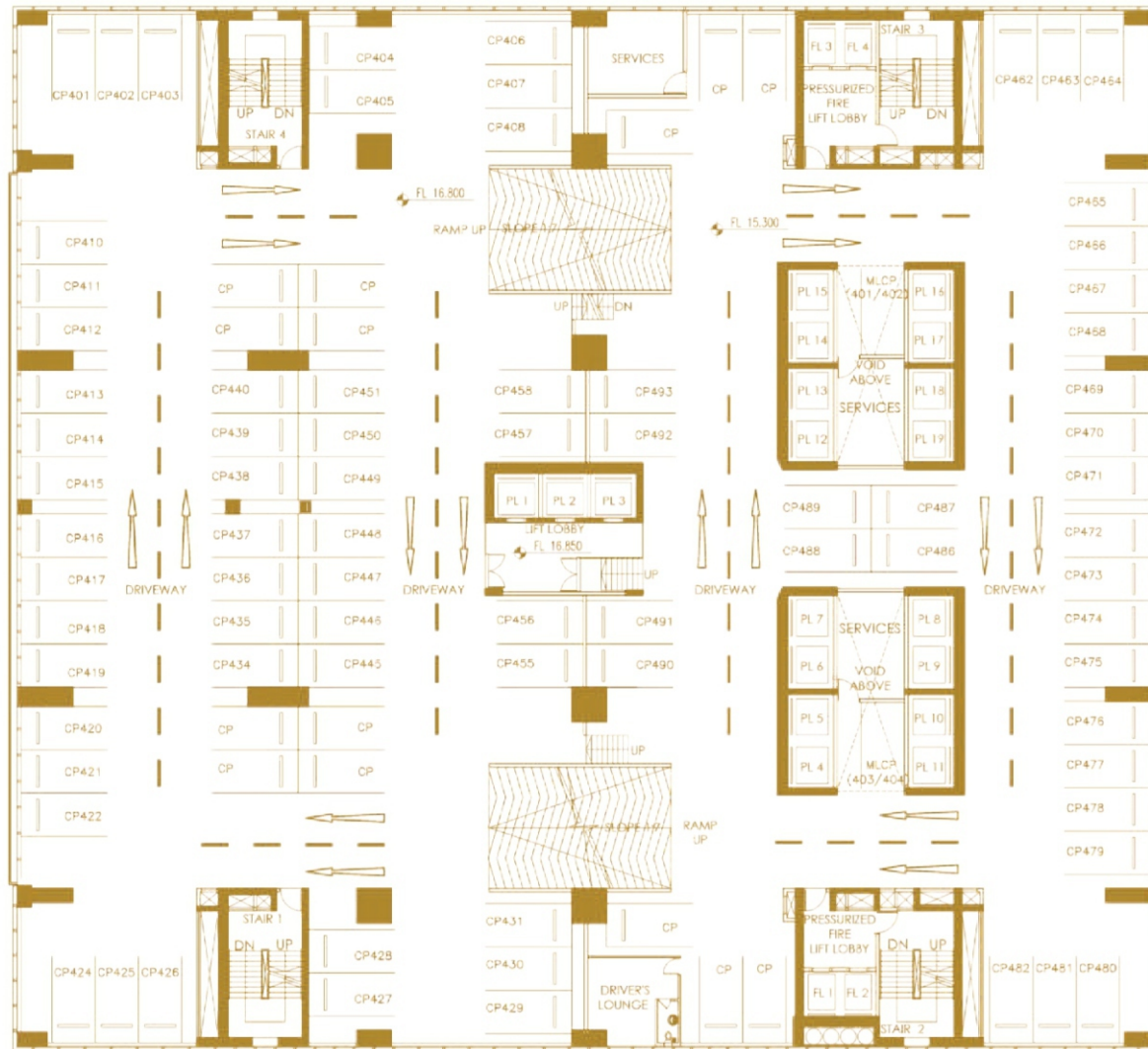


3<sup>RD</sup> FLOOR



9073 66 55 99

**MODERN** RNN  
PROPERTIES



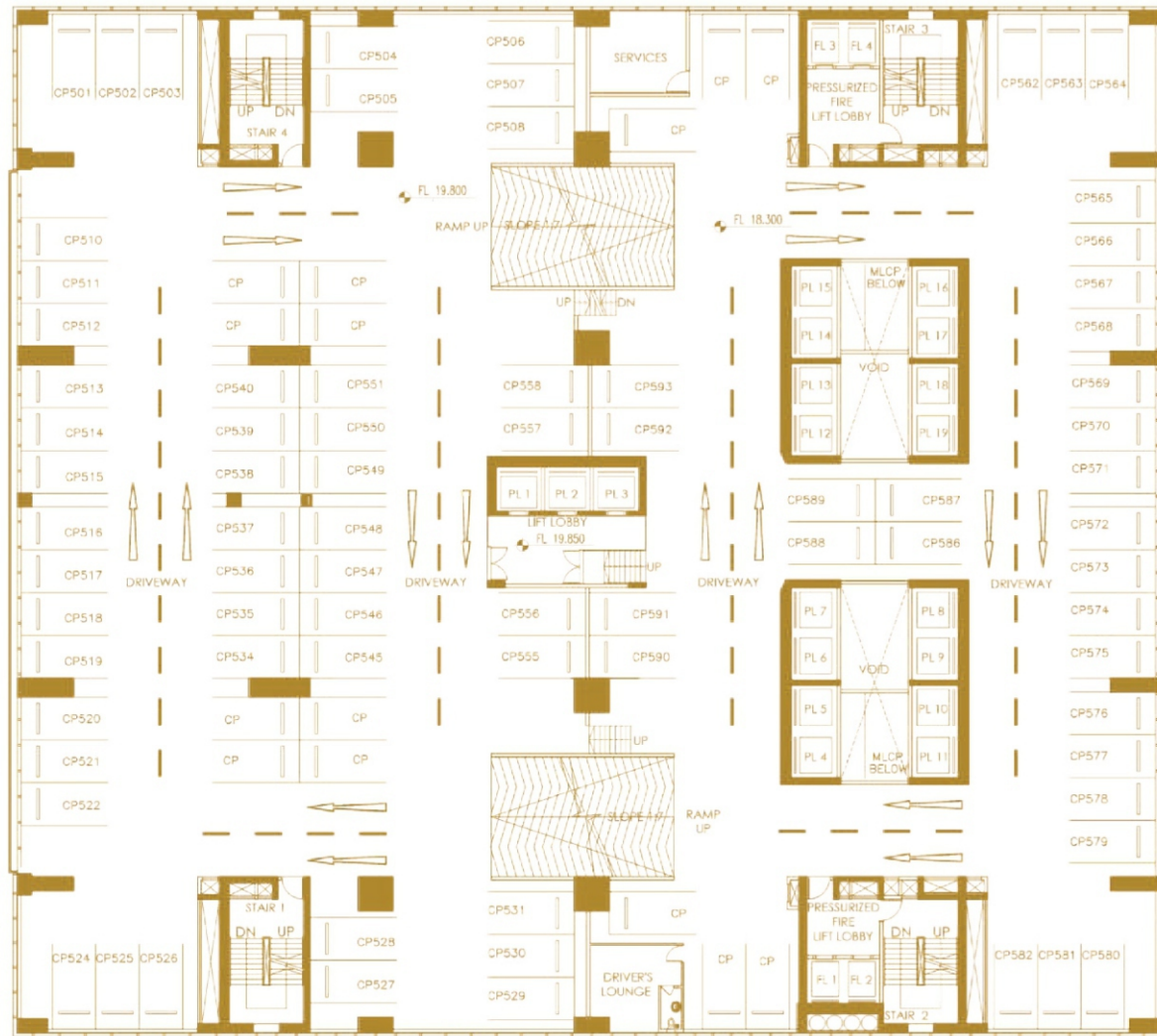
4<sup>TH</sup> FLOOR



9073 66 55 99

**MODERN** RNN  
PROPERTIES



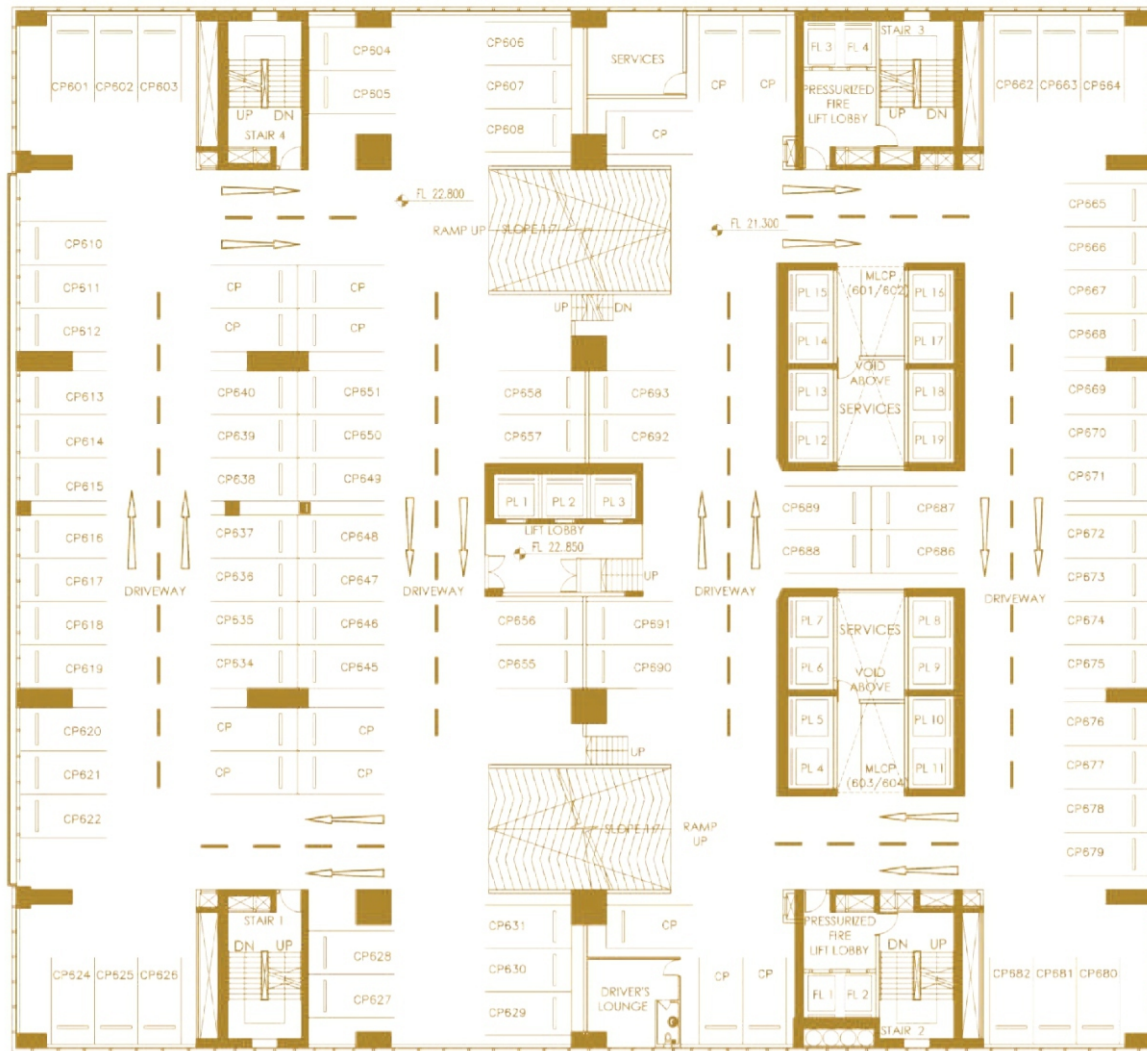


5<sup>TH</sup> FLOOR



9073 66 55 99

**MODERN**  
PROPERTIES

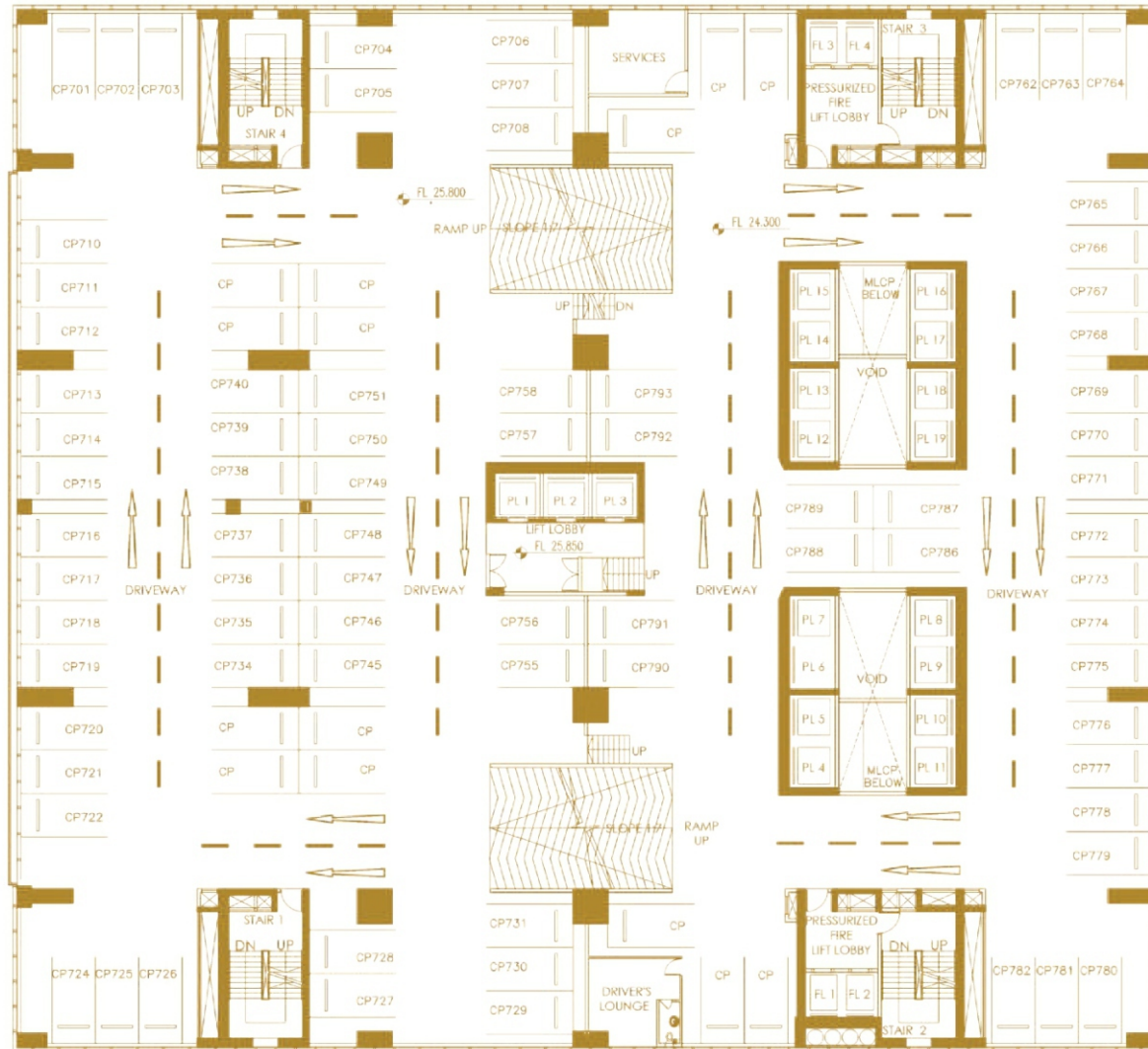


6<sup>TH</sup> FLOOR



9073 66 55 99

**MODERN** RNN  
PROPERTIES

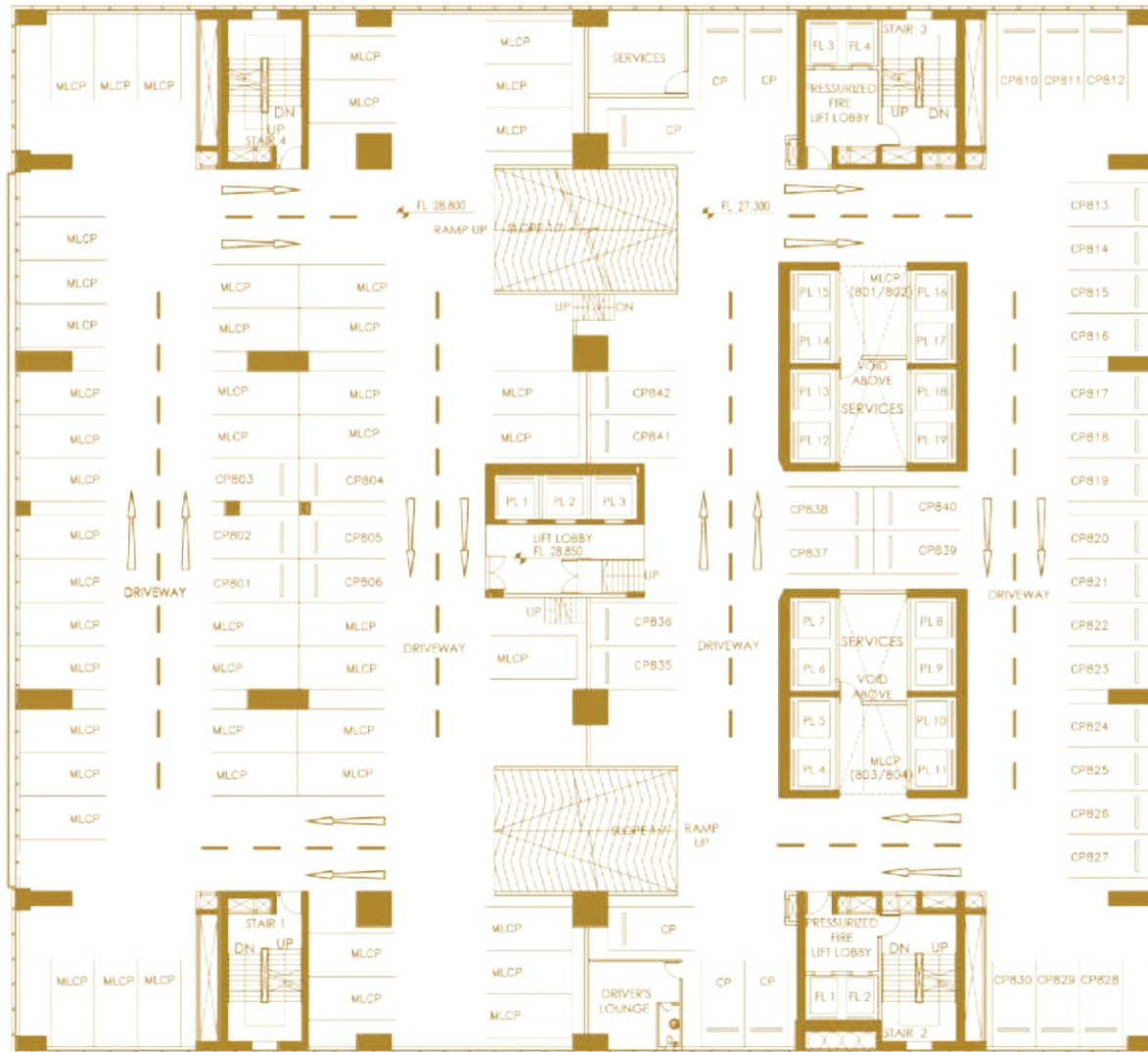


7<sup>TH</sup> FLOOR



9073 66 55 99

**MODERN** RNN  
PROPERTIES

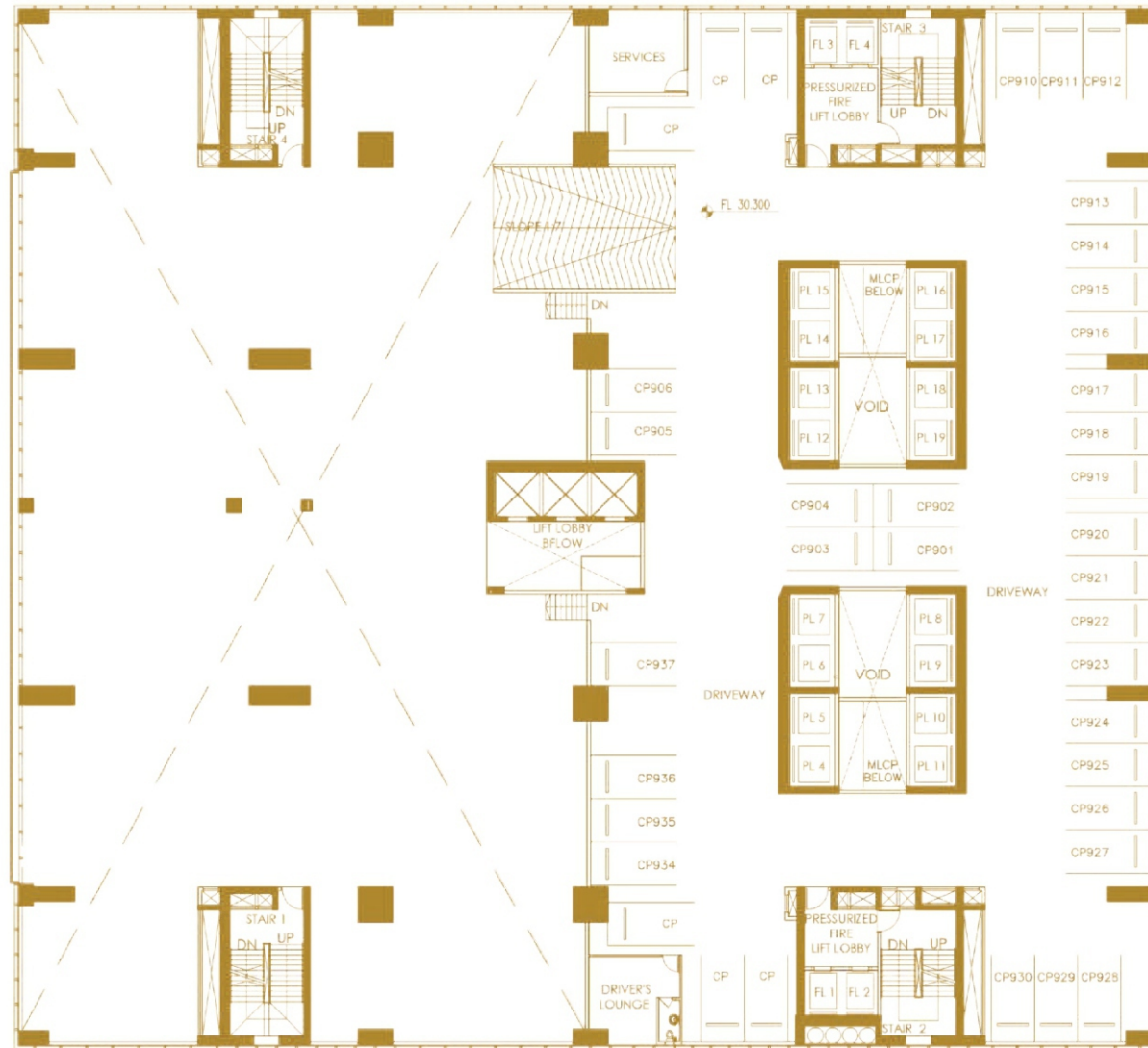


8<sup>TH</sup> FLOOR



9073 66 55 99

**MODERN** RNN  
PROPERTIES



9<sup>TH</sup> FLOOR



9073 66 55 99

**MODERN** RNN  
PROPERTIES



10<sup>TH</sup> FLOOR



9073 66 55 99

**MODERN** RNN  
PROPERTIES

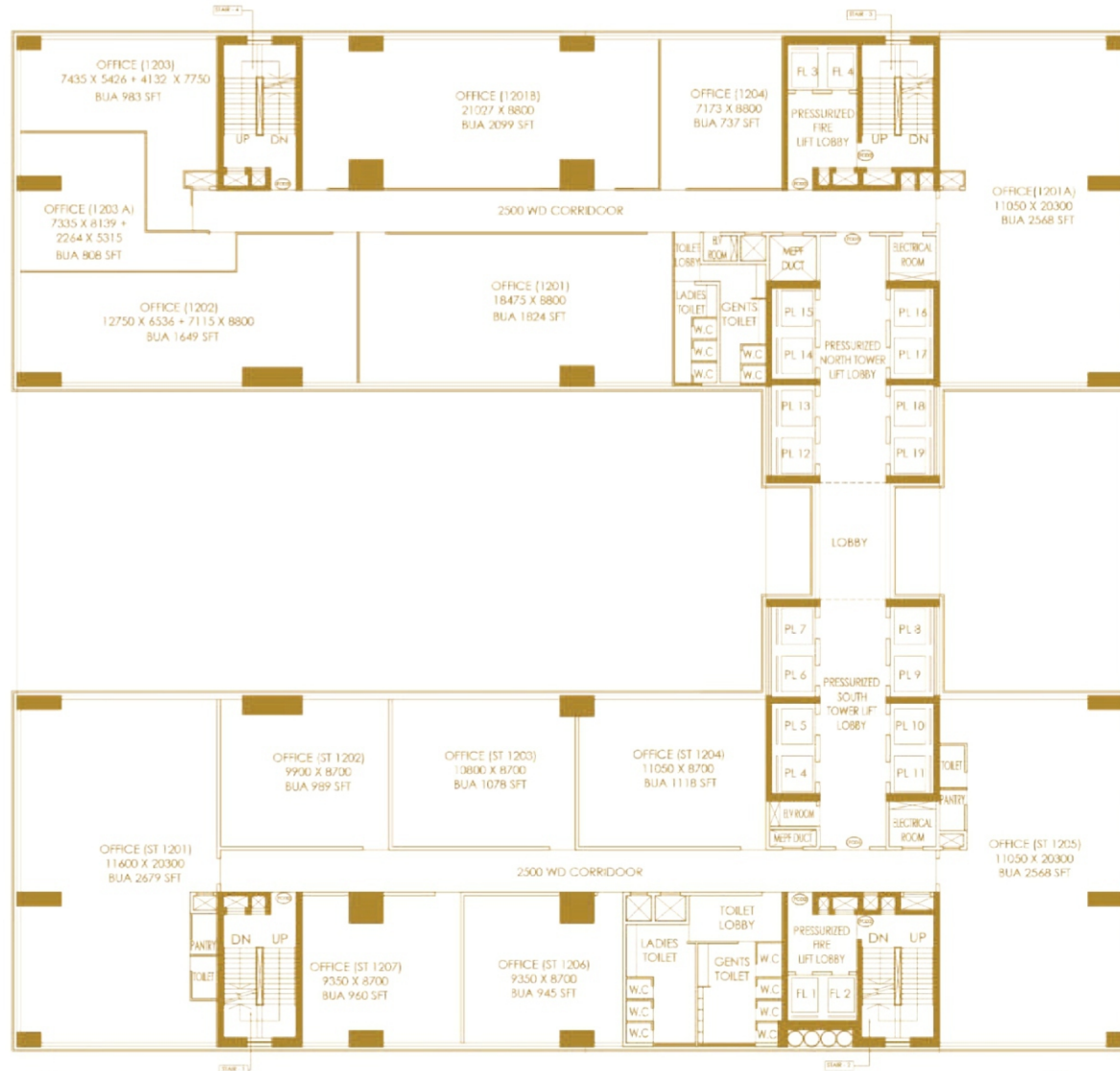


**11<sup>TH</sup> FLOOR**



**9073 66 55 99**

**MODERN**  
PROPERTIES



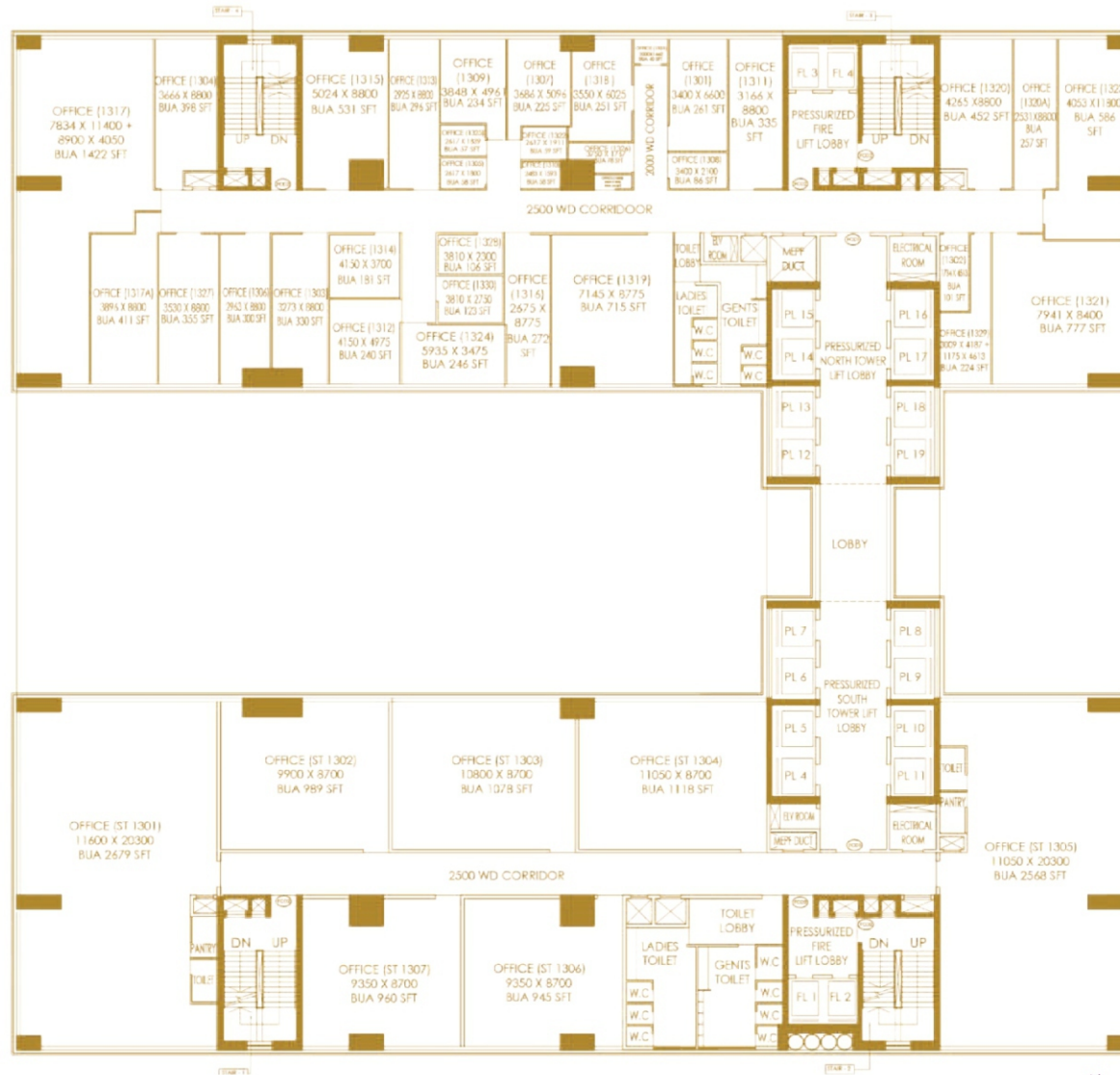
12<sup>TH</sup> FLOOR



9073 66 55 99

**MODERN** PROPERTIES



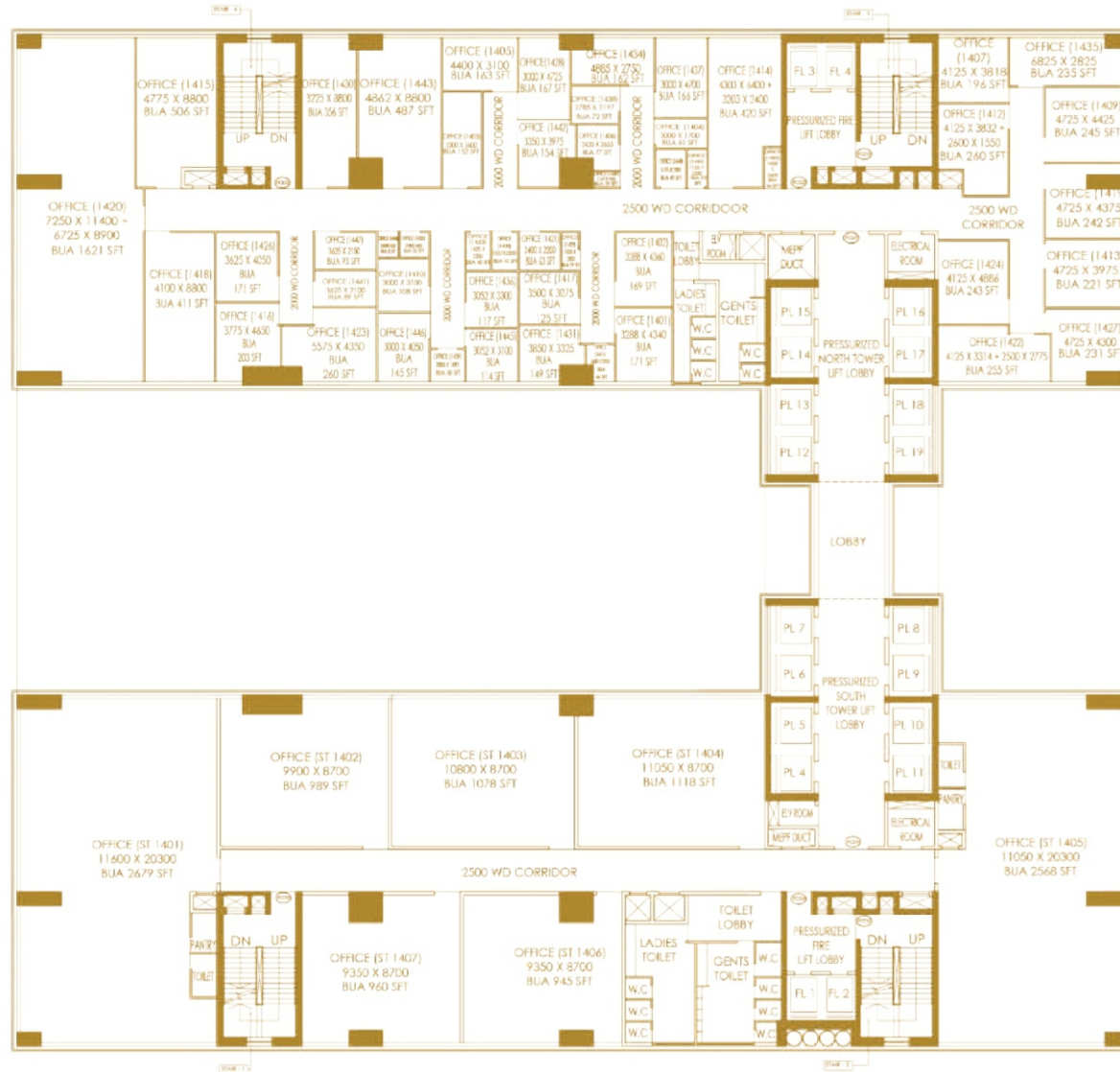


13<sup>TH</sup> FLOOR



9073 66 55 99

**MODERN**  
PROPERTIES



14<sup>TH</sup> FLOOR



9073 66 55 99

**MODERN** PROPERTIES



15<sup>TH</sup> FLOOR



9073 66 55 99

**MODERN** PROPERTIES



16<sup>TH</sup> FLOOR



9073 66 55 99

**MODERN** PROPERTIES

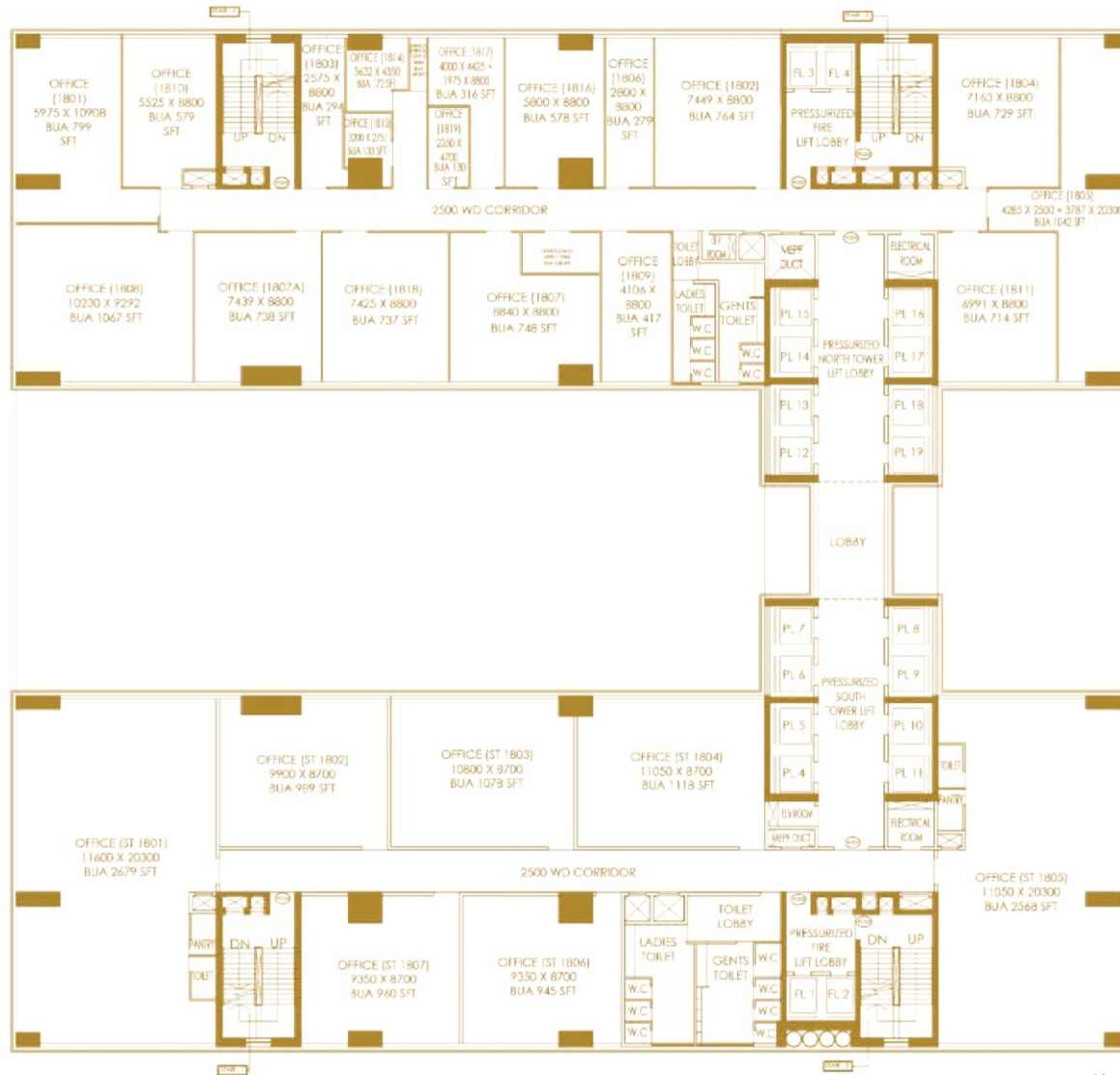


17<sup>TH</sup> FLOOR



9073 66 55 99

**MODERN** PROPERTIES



18<sup>TH</sup> FLOOR



9073 66 55 99

**MODERN** PROPERTIES



19<sup>TH</sup> FLOOR



9073 66 55 99

**MODERN**  
PROPERTIES



20<sup>TH</sup> FLOOR



9073 66 55 99

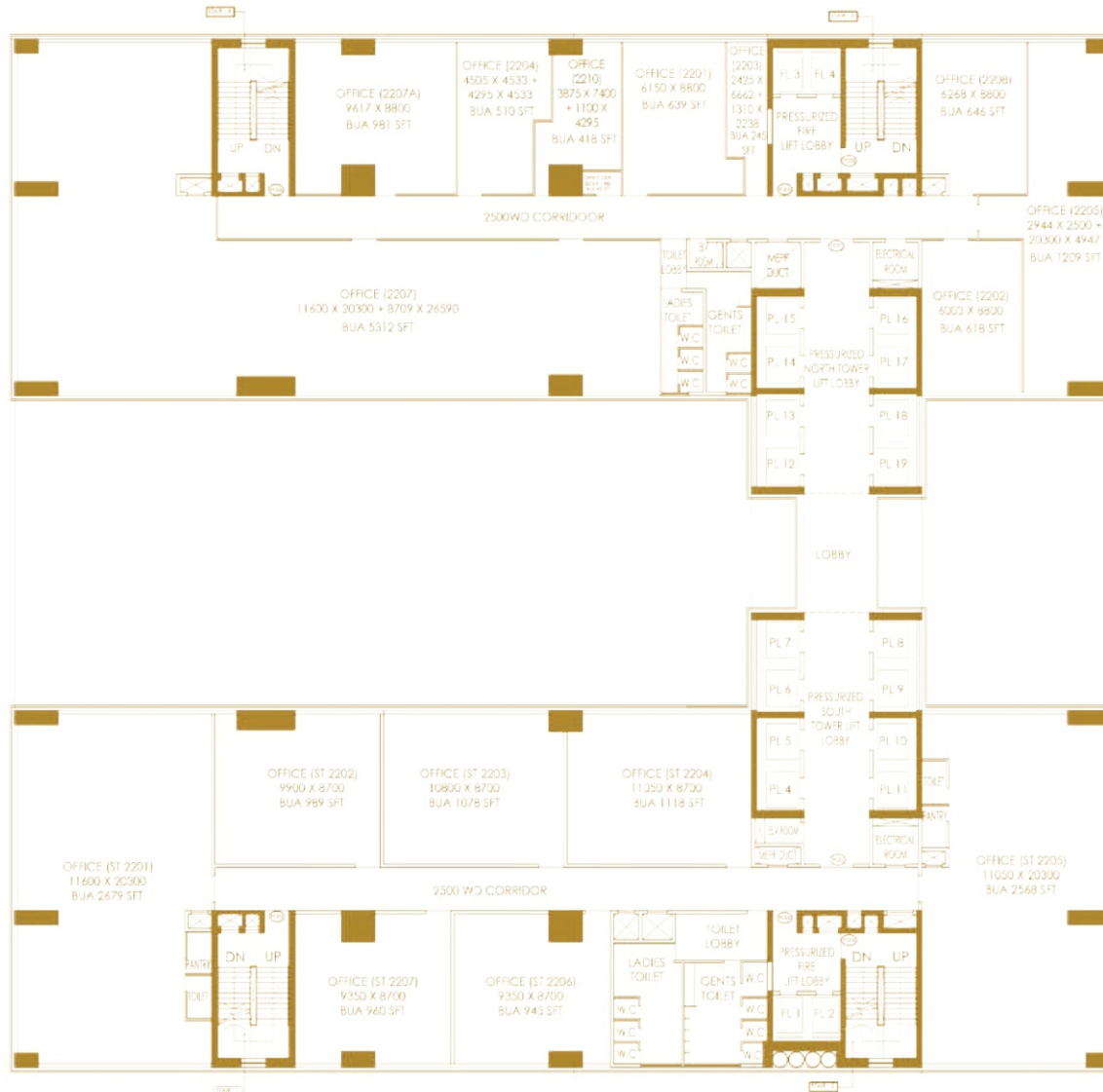
**MODERN**  
PROPERTIES





9073 66 55 99

**MODERN**  
PROPERTIES



22<sup>ND</sup> FLOOR



9073 66 55 99

**MODERN**  
PROPERTIES



23<sup>RD</sup> - 25<sup>TH</sup> FLOOR (TYPICAL)



9073 66 55 99

**MODERN**  
PROPERTIES



9073 66 55 99

**MODERN** PROPERTIES



27<sup>TH</sup> FLOOR



9073 66 55 99

**MODERN** PROPERTIES



28<sup>TH</sup> - 29<sup>TH</sup> FLOOR (TYPICAL)



9073 66 55 99

**MODERN**  
PROPERTIES



30<sup>TH</sup> FLOOR



9073 66 55 99

**MODERN** RNN  
PROPERTIES



31<sup>ST</sup> - 34<sup>TH</sup> FLOOR (TYPICAL)



9073 66 55 99

**MODERN** RNN  
PROPERTIES





35<sup>TH</sup> FLOOR



9073 66 55 99

MODERN RNN  
PROPERTIES



36<sup>TH</sup> FLOOR



9073 66 55 99

**MODERN** RNN  
PROPERTIES



37<sup>TH</sup> FLOOR



9073 66 55 99

**MODERN** PROPERTIES

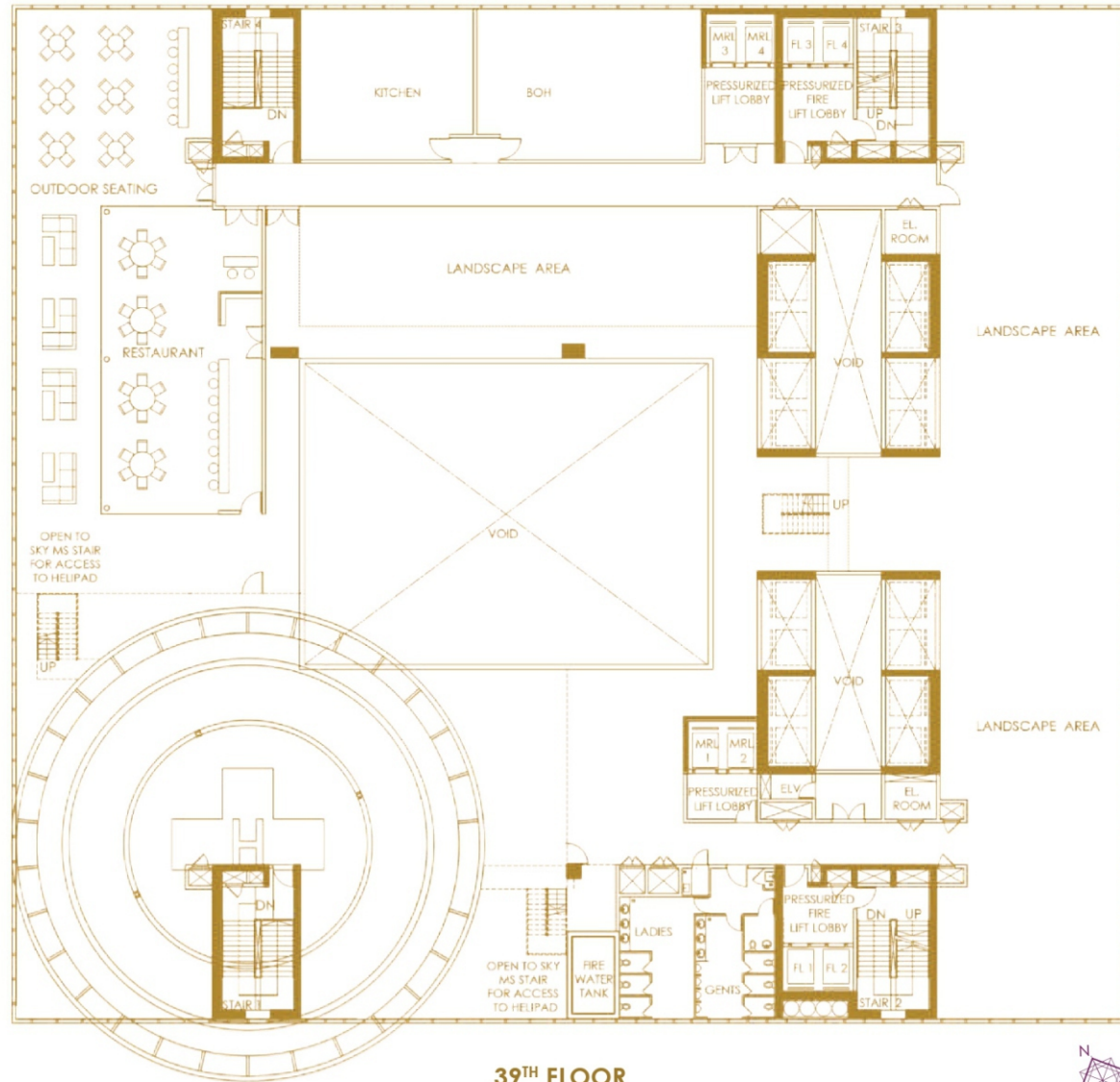


38<sup>TH</sup> FLOOR



9073 66 55 99

**MODERN** RNN  
PROPERTIES



39<sup>TH</sup> FLOOR



9073 66 55 99

**MODERN**RNN  
PROPERTIES

## SPECIFICATIONS

### FOUNDATION

- RCC Pile and Pile Cap Raft

### SUPERSTRUCTURE

- Framed structure as per relevant IS Codes

### WALLS

- External Wall – Lightweight AAC blocks or equivalent
- Common Walls – Lightweight AAC blocks or equivalent

### Windows / Glazing (Facade)

- Combination of Cladding / Paint Louvers / Glazing (as per the architect's scheme)

### DOORS

- Staircases – Fire Resistant Door
- Common Toilets – Flush Door
- Offices – as per specification by the project architect
- Retail Spaces – as per specification by the project architect

### WATER-PROOFING

- As per specification by the project architect / consultant

### ULTIMATE ROOF

- Façade Access System
- Solar - Power System
- Lightning Arrester
- Aviation Lighting
- Staircase Mumty
- Lift Machine Room
- Overhead Water Tanks

### ELECTRICAL POWER SUPPLY

- Office & Retail Areas – Electrical Wiring – 3 Phases up to the main DB
- Common Areas – as per the consultant scheme

### POWER BACK-UP

- Full DG Back-up

### AIR CONDITIONING

- Common Areas
- Office & Retail Spaces
- Restaurant / Kitchen

(Note: Only the high side would be provided by the promoter and the low side to be executed by the allottee at his own cost. Operating charges as per BTU meter or as per sq.ft. basis for normal operation hours)



9073 66 55 99

MODERN  
PROPERTIES

## SPECIFICATIONS

### Safety and Security

- 24x7 manned premises with CCTV surveillance

### Fire Protection System

- Fire Safety systems as per recommendation of West Bengal Fire Services Department

### Super Features (GREEN INITIATIVES)

- Waste Management
- Ample Green Space
- Recycled Water for Gardening
- Dual Flushing System
- Rainwater Harvesting
- Proposed Gold-Certified Green Building

### Wall Finishing

- Office Space & Retail Units – Gypsum / Cement Plaster (only on the common walls)
- External Façade – Combination of Cladding Louver / Glazing as per the Architect's Scheme

### Internal Wall Finishing

- Office Corridors & Lobbies - Gypsum / Cement Plaster (only on the common walls)
- Fire Escape Staircases – Gypsum / Cement Plaster (only on the common walls)
- Covered Car Park Area – Gypsum / Cement Plaster (only on the common walls)
- Ground Floor Main Entrance Lobby – Gypsum / Cement Plaster (only on the common walls)
- Lift Car- as per Manufacturer specification / Architect's Scheme

### Floor Finishing

- Office Space & Retail Units – Bare RCC Floor
- Exclusive Office Terraces – Bare RCC Floor
- Common Areas – as per Architect's Scheme
- Ground Floor Main Entrance Lobby – Aesthetically designed lobby as per the Architect's Scheme
- Lift Lobby & Office Corridors – Aesthetically designed lobby as per the Architect's scheme
- Common Staircases – as per the Architect's Scheme
- Covered Car Park Areas – as per the Architect's Scheme
- Other Common Services Rooms - Bare RCC Floor
- Lift Car – as per Manufacturer specification / Architect's Scheme



9073 66 55 99

MODERN  
PROPERTIES

## GROUND FLOOR

Unit No.	Type	Carpet Area (Sq.Ft.)	Built-Up Area (Sq.Ft.)	Super Built-Up Area (Sq.Ft.)	Terrace Area (Sq.ft.)
K-GR01	Retail + Café	10742	11462	19103	

## 1<sup>ST</sup> FLOOR

Unit No.	Type	Carpet Area (Sq.Ft.)	Built-Up Area (Sq.Ft.)	Super Built-Up Area (Sq.Ft.)	Terrace Area (Sq.ft.)
K-0101	Foodcourt + Restaurant	27308	29769	49615	

## 10<sup>TH</sup> FLOOR

Unit No.	Type	Carpet Area (Sq.Ft.)	Built-Up Area (Sq.Ft.)	Super Built-Up Area (Sq.Ft.)	Terrace Area (Sq.ft.)
K-1001	Business Club + Restaurant	22702	24370	37948	10910

## 11<sup>TH</sup> FLOOR

Tower	Unit No.	Type	Carpet Area (Sq.Ft.)	Built-Up Area (Sq.Ft.)	Super Built-Up Area (Sq.Ft.)
North	1101	Office	5480	5833	9176
North	1102	Office	152	190	298
North	1103	Office	509	558	877
North	1104	Office	520	569	895
North	1105	Office	69	79	124
North	1106	Office	350	417	656
North	1107	Office	62	73	115
North	1109	Office	64	82	129
North	1110	Office	448	508	800
North	1111	Office	274	296	466
North	1112	Office	330	367	577
North	1113	Office	653	713	1121
North	1114	Office	194	208	328
North	1115	Office	261	290	456
South	ST-1101	Office	2493	2679	4214
South	ST-1102	Office	900	989	1556
South	ST-1103	Office	1008	1078	1696
South	ST-1104	Office	1031	1118	1759
South	ST-1105	Office	2374	2568	4039
South	ST-1106	Office	848	945	1487
South	ST-1107	Office	852	960	1510



9073 66 55 99

MODERN RNN  
PROPERTIES



## 12<sup>TH</sup> FLOOR

Tower	Unit No.	Type	Carpet Area (Sq.Ft.)	Built-Up Area (Sq.Ft.)	Super Built-Up Area (Sq.Ft.)
North	1201	Office	1723	1824	2870
North	1202	Office	1543	1649	2594
North	1203	Office	873	983	1547
North	1204	Office	679	737	1159
North	1201A	Office	2372	2568	4039
North	1201B	Office	1932	2099	3302
North	1203A	Office	759	808	1270
South	ST-1201	Office	2493	2679	4214
South	ST-1202	Office	900	989	1556
South	ST-1203	Office	1008	1078	1696
South	ST-1204	Office	1031	1118	1759
South	ST-1205	Office	2374	2568	4039
South	ST-1206	Office	848	945	1487
South	ST-1207	Office	852	960	1510

## 13<sup>TH</sup> FLOOR

Tower	Unit No.	Type	Carpet Area (Sq.Ft.)	Built-Up Area (Sq.Ft.)	Super Built-Up Area (Sq.Ft.)
North	1301	Office	242	261	410
North	1302	Office	84	101	160
North	1303	Office	310	330	520
North	1304	Office	325	398	626
North	1305	Office	51	58	91
North	1306	Office	266	300	472
North	1307	Office	206	225	354
North	1308	Office	78	86	135
North	1309	Office	216	234	367
North	1310	Office	44	58	91
North	1311	Office	300	335	527
North	1312	Office	206	240	378
North	1313	Office	278	296	466
North	1314	Office	165	181	284
North	1315	Office	448	531	836
North	1316	Office	247	272	428
North	1317	Office	1314	1422	2237
North	1318	Office	225	251	395
North	1319	Office	659	715	1124
North	1320	Office	384	452	711



9073 66 55 99

MODERN  
PROPERTIES

## 13<sup>TH</sup> FLOOR

Tower	Unit No.	Type	Carpet Area (Sq.Ft.)	Built-Up Area (Sq.Ft.)	Super Built-Up Area (Sq.Ft.)
North	1321	Office	723	777	1223
North	1322	Office	55	59	93
North	1323	Office	526	586	921
North	1324	Office	226	246	387
North	1325	Office	54	57	90
North	1326	Office	65	78	123
North	1327	Office	334	355	559
North	1328	Office	94	106	167
North	1329	Office	194	224	353
North	1330	Office	115	123	194
North	1331	Office	31	40	63
North	1332	Office	22	34	54
North	1317A	Office	389	411	646
North	1320A	Office	240	257	405
South	ST-1301	Office	2493	2679	4214
South	ST-1302	Office	900	989	1556
South	ST-1303	Office	1008	1078	1696
South	ST-1304	Office	1031	1118	1759
South	ST-1305	Office	2374	2568	4039
South	ST-1306	Office	848	945	1487
South	ST-1307	Office	852	960	1510

## 14<sup>TH</sup> FLOOR

Tower	Unit No.	Type	Carpet Area (Sq.Ft.)	Built-Up Area (Sq.Ft.)	Super Built-Up Area (Sq.Ft.)
North	1401	Office	154	171	269
North	1402	Office	154	169	266
North	1403	Office	140	152	238
North	1404	Office	57	61	96
North	1405	Office	148	163	257
North	1406	Office	67	77	121
North	1407	Office	170	196	309
North	1408	Office	36	41	65
North	1409	Office	227	245	385
North	1410	Office	102	108	171
North	1411	Office	37	46	73
North	1412	Office	214	260	409
North	1413	Office	202	221	347
North	1414	Office	379	420	661



9073 66 55 99

MODERN RNN  
PROPERTIES

## 14<sup>TH</sup> FLOOR

Tower	Unit No.	Type	Carpet Area (Sq.Ft.)	Built-Up Area (Sq.Ft.)	Super Built-Up Area (Sq.Ft.)
North	1415	Office	426	506	797
North	1416	Office	170	203	319
North	1417	Office	117	125	196
North	1418	Office	390	411	647
North	1419	Office	211	242	381
North	1420	Office	1510	1621	2550
North	1421	Office	58	63	100
North	1422	Office	222	255	401
North	1423	Office	223	260	410
North	1424	Office	217	243	382
North	1425	Office	28	32	50
North	1426	Office	158	171	269
North	1427	Office	198	231	363
North	1428	Office	152	167	262
North	1429	Office	24	29	46
North	1430	Office	302	356	560
North	1431	Office	120	149	234
North	1432	Office	28	31	49
North	1433	Office	35	40	63
North	1434	Office	138	162	255
North	1435	Office	204	235	370
North	1436	Office	108	117	184
North	1437	Office	153	166	261
North	1438	Office	66	72	114
North	1439	Office	41	50	78
North	1440	Office	44	49	77
North	1441	Office	82	89	141
North	1442	Office	131	154	243
North	1443	Office	438	487	766
North	1444	Office	20	22	35
North	1445	Office	102	114	180
North	1446	Office	132	145	227
North	1447	Office	84	93	147
North	1449	Office	17	29	46
North	1450	Office	25	36	56
South	ST-1401	Office	2493	2679	4214
South	ST-1402	Office	900	989	1556
South	ST-1403	Office	1008	1078	1696
South	ST-1404	Office	1031	1118	1759
South	ST-1405	Office	2374	2568	4039
South	ST-1406	Office	848	945	1487
South	ST-1407	Office	852	960	1510



9073 66 55 99

MODERN  
PROPERTIES

## 15<sup>TH</sup> FLOOR

Tower	Unit No.	Type	Carpet Area (Sq.Ft.)	Built-Up Area (Sq.Ft.)	Super Built-Up Area (Sq.Ft.)
North	1501	Office	1009	1111	1748
North	1502	Office	1570	1683	2647
North	1504	Office	614	687	1081
North	1505	Office	308	353	555
North	1506	Office	146	165	259
North	1507	Office	338	374	589
North	1508	Office	191	206	323
North	1509	Office	357	392	616
North	1510	Office	119	128	201
North	1511	Office	344	409	643
North	1512	Office	323	360	566
North	1513	Office	311	386	608
North	1514	Office	1173	1245	1958
North	1515	Office	307	325	512
North	1517	Office	643	682	1073
North	1518	Office	73	84	132
North	1519	Office	18	28	43
North	1520	Office	116	131	206
North	1521	Office	629	680	1069
North	1522	Office	338	358	563
North	1523	Office	441	464	730
North	1517A	Office	115	134	210
South	ST-1501	Office	2493	2679	4214
South	ST-1502	Office	900	989	1556
South	ST-1503	Office	1008	1078	1696
South	ST-1504	Office	1031	1118	1759
South	ST-1505	Office	2374	2568	4039
South	ST-1506	Office	848	945	1487
South	ST-1507	Office	852	960	1510



9073 66 55 99

MODERN  
PROPERTIES

## 16<sup>TH</sup> FLOOR

Tower	Unit No.	Type	Carpet Area (Sq.Ft.)	Built-Up Area (Sq.Ft.)	Super Built-Up Area (Sq.Ft.)
North	1601	Office	25	30	47
North	1602	Office	153	171	268
North	1603	Office	573	625	983
North	1604	Office	489	514	809
North	1605	Office	1246	1353	2128
North	1606	Office	926	984	1547
North	1607	Office	128	151	238
North	1608	Office	134	146	230
North	1609	Office	365	436	686
North	1610	Office	192	212	333
North	1611	Office	380	454	715
North	1612	Office	126	146	229
North	1613	Office	444	486	764
North	1614	Office	502	549	863
North	1615	Office	1505	1616	2542
North	1616	Office	99	108	170
North	1617	Office	505	576	907
North	1619	Office	158	176	276
North	1620	Office	101	122	191
North	1621	Office	59	65	103
North	1622	Office	417	448	705
North	1623	Office	352	372	586
North	1624	Office	122	133	209
North	1625	Office	157	183	288
North	1625A	Office	47	63	99
South	ST-1601	Office	2493	2679	4214
South	ST-1602	Office	900	989	1556
South	ST-1603	Office	1008	1078	1696
South	ST-1604	Office	1031	1118	1759
South	ST-1605	Office	2374	2568	4039
South	ST-1606	Office	848	945	1487
South	ST-1607	Office	852	960	1510



9073 66 55 99

MODERN  
PROPERTIES

## 17<sup>TH</sup> FLOOR

Tower	Unit No.	Type	Carpet Area (Sq.Ft.)	Built-Up Area (Sq.Ft.)	Super Built-Up Area (Sq.Ft.)
North	1701	Office	1055	1122	1764
North	1702	Office	802	839	1320
North	1703	Office	888	947	1489
North	1704	Office	316	389	613
North	1705	Office	1006	1077	1695
North	1706	Office	81	89	140
North	1707	Office	928	1000	1572
North	1708	Office	961	1037	1631
North	1709	Office	465	495	779
North	1710	Office	611	703	1106
North	1711	Office	703	759	1194
North	1712	Office	1005	1075	1691
North	1713	Office	348	391	616
North	1714	Office	210	269	424
North	1703A	Office	32	40	63
North	1706A	Office	161	194	306
North	1710C	Office	100	108	171
South	ST-1701	Office	2493	2679	4214
South	ST-1702	Office	900	989	1556
South	ST-1703	Office	1008	1078	1696
South	ST-1704	Office	1031	1118	1759
South	ST-1705	Office	2374	2568	4039
South	ST-1706	Office	848	945	1487
South	ST-1707	Office	852	960	1510



9073 66 55 99

**MODERN** RNN  
PROPERTIES

## 18<sup>TH</sup> FLOOR

Tower	Unit No.	Type	Carpet Area (Sq.Ft.)	Built-Up Area (Sq.Ft.)	Super Built-Up Area (Sq.Ft.)
North	1801	Office	735	799	1257
North	1802	Office	706	764	1202
North	1803	Office	245	294	463
North	1804	Office	658	729	1147
North	1805	Office	936	1042	1640
North	1806	Office	265	279	439
North	1807	Office	696	748	1176
North	1808	Office	1004	1067	1679
North	1809	Office	389	417	656
North	1810	Office	501	579	911
North	1811	Office	662	714	1124
North	1812	Office	118	128	201
North	1814	Office	147	172	271
North	1815	Office	105	133	209
North	1816	Office	517	578	909
North	1817	Office	293	316	497
North	1818	Office	687	737	1159
North	1819	Office	121	130	205
North	1801A	Office	34	40	63
North	1807A	Office	688	738	1162
South	ST-1801	Office	2493	2679	4214
South	ST-1802	Office	900	989	1556
South	ST-1803	Office	1008	1078	1696
South	ST-1804	Office	1031	1118	1759
South	ST-1805	Office	2374	2568	4039
South	ST-1806	Office	848	945	1487
South	ST-1807	Office	852	960	1510



9073 66 55 99

MODERN RNN  
PROPERTIES

## 19<sup>TH</sup> FLOOR

Tower	Unit No.	Type	Carpet Area (Sq.Ft.)	Built-Up Area (Sq.Ft.)	Super Built-Up Area (Sq.Ft.)
North	1901	Office	2374	2568	4039
North	1902	Office	453	503	791
North	1903	Office	502	549	863
North	1904	Office	503	529	833
North	1905	Office	509	569	896
North	1906	Office	313	389	612
North	1907	Office	627	680	1069
North	1908	Office	1005	1076	1692
North	1909	Office	1127	1234	1941
North	1901A	Office	1851	1963	3087
North	1903A	Office	147	157	246
North	1907A	Office	377	401	630
South	ST-1901	Office	2493	2679	4214
South	ST-1902	Office	900	989	1556
South	ST-1903	Office	1008	1078	1696
South	ST-1904	Office	1031	1118	1759
South	ST-1905	Office	2374	2568	4039
South	ST-1906	Office	848	945	1487
South	ST-1907	Office	852	960	1510

## 20<sup>TH</sup> FLOOR

Tower	Unit No.	Type	Carpet Area (Sq.Ft.)	Built-Up Area (Sq.Ft.)	Super Built-Up Area (Sq.Ft.)
North	2001	Office	232	271	426
North	2002	Office	4984	5311	8355
North	2003	Office	2369	2568	4039
North	2001A	Office	221	263	413
North	2002A	Office	50	64	101
North	2003A	Office	2094	2237	3520
South	ST-2001	Office	2493	2679	4214
South	ST-2002	Office	900	989	1556
South	ST-2003	Office	1008	1078	1696
South	ST-2004	Office	1031	1118	1759
South	ST-2005	Office	2374	2568	4039
South	ST-2006	Office	848	945	1487
South	ST-2007	Office	852	960	1510



9073 66 55 99

MODERN RNN  
PROPERTIES



## 21<sup>ST</sup> FLOOR

Tower	Unit No.	Type	Carpet Area (Sq.Ft.)	Built-Up Area (Sq.Ft.)	Super Built-Up Area (Sq.Ft.)
North	2101	Office	506	533	838
North	2102	Office	734	802	1262
North	2103	Office	4758	5073	7981
North	2104	Office	447	531	835
North	2106	Office	760	818	1288
North	2107	Office	216	238	375
North	2103A	Office	2369	2568	4039
South	ST-2101	Office	2493	2679	4214
South	ST-2102	Office	900	989	1556
South	ST-2103	Office	1008	1078	1696
South	ST-2104	Office	1031	1118	1759
South	ST-2105	Office	2374	2568	4039
South	ST-2106	Office	848	945	1487
South	ST-2107	Office	852	960	1510

## 22<sup>ND</sup> FLOOR

Tower	Unit No.	Type	Carpet Area (Sq.Ft.)	Built-Up Area (Sq.Ft.)	Super Built-Up Area (Sq.Ft.)
North	2201	Office	607	639	1004
North	2202	Office	569	618	972
North	2203	Office	204	245	386
North	2204	Office	483	510	802
North	2205	Office	1104	1209	1901
North	2207	Office	4987	5312	8356
North	2208	Office	574	646	1017
North	2209	Office	36	43	67
North	2210	Office	365	418	657
North	2207A	Office	883	981	1544
South	ST-2201	Office	2493	2679	4214
South	ST-2202	Office	900	989	1556
South	ST-2203	Office	1008	1078	1696
South	ST-2204	Office	1031	1118	1759
South	ST-2205	Office	2374	2568	4039
South	ST-2206	Office	848	945	1487
South	ST-2207	Office	852	960	1510



9073 66 55 99

MODERN RNN  
PROPERTIES

## 23<sup>RD</sup> FLOOR

Tower	Unit No.	Type	Carpet Area (Sq.Ft.)	Built-Up Area (Sq.Ft.)	Super Built-Up Area (Sq.Ft.)
North	NT-2301	Office	2495	2679	4214
North	NT-2302	Office	1299	1420	2234
North	NT-2303	Office	1296	1415	2227
North	NT-2304	Office	2381	2568	4039
North	NT-2305	Office	1166	1259	1980
North	NT-2306	Office	1122	1215	1911
South	ST-2301	Office	2502	2679	4214
South	ST-2302	Office	906	989	1556
South	ST-2303	Office	1009	1078	1696
South	ST-2304	Office	1032	1118	1759
South	ST-2305	Office	2383	2568	4039
South	ST-2306	Office	855	945	1487
South	ST-2307	Office	858	960	1510

## 24<sup>TH</sup> FLOOR

Tower	Unit No.	Type	Carpet Area (Sq.Ft.)	Built-Up Area (Sq.Ft.)	Super Built-Up Area (Sq.Ft.)
North	NT-2401	Office	2495	2679	4214
North	NT-2402	Office	1299	1420	2234
North	NT-2403	Office	1296	1415	2227
North	NT-2404	Office	2381	2568	4039
North	NT-2405	Office	1166	1259	1980
North	NT-2406	Office	1122	1215	1911
South	ST-2401	Office	2502	2679	4214
South	ST-2402	Office	906	989	1556
South	ST-2403	Office	1009	1078	1696
South	ST-2404	Office	1032	1118	1759
South	ST-2405	Office	2383	2568	4039
South	ST-2406	Office	855	945	1487
South	ST-2407	Office	858	960	1510



9073 66 55 99

MODERN RNN  
PROPERTIES

## 25<sup>TH</sup> FLOOR

Tower	Unit No.	Type	Carpet Area (Sq.Ft.)	Built-Up Area (Sq.Ft.)	Super Built-Up Area (Sq.Ft.)
North	NT-2501	Office	2495	2679	4214
North	NT-2502	Office	1299	1420	2234
North	NT-2503	Office	1296	1415	2227
North	NT-2504	Office	2381	2568	4039
North	NT-2505	Office	1166	1259	1980
North	NT-2506	Office	1122	1215	1911
South	ST-2501	Office	2502	2679	4214
South	ST-2502	Office	906	989	1556
South	ST-2503	Office	1009	1078	1696
South	ST-2504	Office	1032	1118	1759
South	ST-2505	Office	2383	2568	4039
South	ST-2506	Office	855	945	1487
South	ST-2507	Office	858	960	1510

## 26<sup>TH</sup> FLOOR

Tower	Unit No.	Type	Carpet Area (Sq.Ft.)	Built-Up Area (Sq.Ft.)	Super Built-Up Area (Sq.Ft.)
North	NT-2601	Office	2495	2679	4214
North	NT-2602	Office	1191	1308	2057
North	NT-2603	Office	1198	1303	2049
North	NT-2604	Office	2381	2568	4039
North	NT-2605	Office	1166	1259	1980
North	NT-2606	Office	1122	1215	1911
South	ST-2601	Office	2502	2679	4214
South	ST-2602	Office	906	989	1556
South	ST-2603	Office	1009	1078	1696
South	ST-2604	Office	1032	1118	1759
South	ST-2605	Office	2383	2568	4039
South	ST-2606	Office	855	945	1487
South	ST-2607	Office	858	960	1510



9073 66 55 99

MODERN  
PROPERTIES

## 27<sup>TH</sup> FLOOR

Tower	Unit No.	Type	Carpet Area (Sq.Ft.)	Built-Up Area (Sq.Ft.)	Super Built-Up Area (Sq.Ft.)
North	NT-2701	Office	5556	5754	9052
North	NT-2702	Office	1389	1526	2400
North	NT-2703	Office	1299	1420	2234
North	NT-2704	Office	1296	1415	2227
North	NT-2705	Office	2381	2568	4039
North	NT-2706	Office	1166	1259	1980
South	ST-2701	Office	2503	2666	4194
South	ST-2702	Office	906	984	1547
South	ST-2703	Office	1009	1078	1696
South	ST-2704	Office	1032	1118	1759
South	ST-2705	Office	2383	2568	4039
South	ST-2706	Office	855	945	1487
TSouth	ST-2707	Office	858	960	1510

## 28<sup>TH</sup> FLOOR

Tower	Unit No.	Type	Carpet Area (Sq.Ft.)	Built-Up Area (Sq.Ft.)	Super Built-Up Area (Sq.Ft.)
North	NT-2801	Office	5558	5754	9052
North	NT-2802	Office	1392	1526	2400
North	NT-2803	Office	1299	1420	2234
North	NT-2804	Office	1296	1415	2227
North	NT-2805	Office	2385	2568	4039
North	NT-2806	Office	1166	1259	1980
South	ST-2801	Office	2507	2666	4194
South	ST-2802	Office	906	984	1547
South	ST-2803	Office	1009	1078	1696
South	ST-2804	Office	1032	1118	1759
South	ST-2805	Office	2387	2568	4039
South	ST-2806	Office	855	945	1487
South	ST-2807	Office	858	960	1510



9073 66 55 99

MODERN RNN  
PROPERTIES

## 29<sup>TH</sup> FLOOR

Tower	Unit No.	Type	Carpet Area (Sq.Ft.)	Built-Up Area (Sq.Ft.)	Super Built-Up Area (Sq.Ft.)
North	NT-2901	Office	5558	5754	9052
North	NT-2902	Office	1392	1526	2400
North	NT-2903	Office	1299	1420	2234
North	NT-2904	Office	1296	1415	2227
North	NT-2905	Office	2385	2568	4039
North	NT-2906	Office	1166	1259	1980
South	ST-2901	Office	2507	2666	4194
South	ST-2902	Office	906	984	1547
South	ST-2903	Office	1009	1078	1696
South	ST-2904	Office	1032	1118	1759
South	ST-2905	Office	2387	2568	4039
South	ST-2906	Office	855	945	1487
South	ST-2907	Office	858	960	1510

## 30<sup>TH</sup> FLOOR

Tower	Unit No.	Type	Carpet Area (Sq.Ft.)	Built-Up Area (Sq.Ft.)	Super Built-Up Area (Sq.Ft.)	Terrace Area (Sq.ft.)
North	NT-3001	Office	2499	2679	4800	1172
North	NT-3002	Office	1198	1308	2057	
North	NT-3003	Office	1204	1303	2049	
North	NT-3004	Office	2385	2568	4039	
North	NT-3005	Office	1173	1259	1980	
North	NT-3006	Office	1135	1215	2167	512
South	ST-3001	Office	2506	2679	4800	1172
South	ST-3002	Office	920	989	1812	512
South	ST-3003	Office	1013	1078	1696	
South	ST-3004	Office	1036	1118	1759	
South	ST-3005	Office	2387	2568	4039	
South	ST-3006	Office	864	945	1487	



9073 66 55 99

MODERN RNN  
PROPERTIES

## 31<sup>ST</sup> FLOOR

Tower	Unit No.	Type	Carpet Area (Sq.Ft.)	Built-Up Area (Sq.Ft.)	Super Built-Up Area (Sq.Ft.)
North	NT-3101	Office	2499	2679	4214
North	NT-3102	Office	1309	1420	2234
North	NT-3103	Office	1309	1415	2227
North	NT-3104	Office	2385	2568	4039
North	NT-3105	Office	1173	1259	1980
North	NT-3106	Office	1135	1215	1911
South	ST-3101	Office	2506	2679	4214
South	ST-3102	Office	920	989	1556
South	ST-3103	Office	1013	1078	1696
South	ST-3104	Office	1036	1118	1759
South	ST-3105	Office	2387	2568	4039
South	ST-3106	Office	868	945	1487
South	ST-3107	Office	868	960	1510

## 32<sup>ND</sup> FLOOR

Tower	Unit No.	Type	Carpet Area (Sq.Ft.)	Built-Up Area (Sq.Ft.)	Super Built-Up Area (Sq.Ft.)
North	NT-3201	Office	2499	2679	4214
North	NT-3202	Office	1309	1420	2234
North	NT-3203	Office	1309	1415	2227
North	NT-3204	Office	2385	2568	4039
North	NT-3205	Office	1173	1259	1980
North	NT-3206	Office	1135	1215	1911
South	ST-3201	Office	2506	2679	4214
South	ST-3202	Office	920	989	1556
South	ST-3203	Office	1013	1078	1696
South	ST-3204	Office	1036	1118	1759
South	ST-3205	Office	2387	2568	4039
South	ST-3206	Office	868	945	1487
South	ST-3207	Office	868	960	1510



9073 66 55 99

MODERN RNN  
PROPERTIES

## 33<sup>RD</sup> FLOOR

Tower	Unit No.	Type	Carpet Area (Sq.Ft.)	Built-Up Area (Sq.Ft.)	Super Built-Up Area (Sq.Ft.)
North	NT-3301	Office	2499	2679	4214
North	NT-3302	Office	1309	1420	2234
North	NT-3303	Office	1309	1415	2227
North	NT-3304	Office	2385	2568	4039
North	NT-3305	Office	1173	1259	1980
North	NT-3306	Office	1135	1215	1911
South	ST-3301	Office	2506	2679	4214
South	ST-3302	Office	920	989	1556
South	ST-3303	Office	1013	1078	1696
South	ST-3304	Office	1036	1118	1759
South	ST-3305	Office	2387	2568	4039
South	ST-3306	Office	868	945	1487
South	ST-3307	Office	868	960	1510

## 34<sup>TH</sup> FLOOR

Tower	Unit No.	Type	Carpet Area (Sq.Ft.)	Built-Up Area (Sq.Ft.)	Super Built-Up Area (Sq.Ft.)
North	NT-3401	Office	2499	2679	4214
North	NT-3402	Office	1309	1420	2234
North	NT-3403	Office	1309	1415	2227
North	NT-3404	Office	2385	2568	4039
North	NT-3405	Office	1173	1259	1980
North	NT-3406	Office	1135	1215	1911
South	ST-3401	Office	2506	2679	4214
South	ST-3402	Office	920	989	1556
South	ST-3403	Office	1013	1078	1696
South	ST-3404	Office	1036	1118	1759
South	ST-3405	Office	2387	2568	4039
South	ST-3406	Office	868	945	1487
South	ST-3407	Office	868	960	1510



9073 66 55 99

MODERN  
PROPERTIES

## 35<sup>TH</sup> FLOOR

Tower	Unit No.	Type	Carpet Area (Sq.Ft.)	Built-Up Area (Sq.Ft.)	Super Built-Up Area (Sq.Ft.)
North	NT-3501	Office	2499	2679	4214
North	NT-3502	Office	1201	1308	2057
North	NT-3503	Office	1210	1303	2049
North	NT-3504	Office	2385	2568	4039
North	NT-3505	Office	1173	1259	1980
North	NT-3506	Office	1135	1215	1911
South	ST-3501	Office	2506	2679	4214
South	ST-3502	Office	920	989	1556
South	ST-3503	Office	1013	1078	1696
South	ST-3504	Office	1036	1118	1759
South	ST-3505	Office	2387	2568	4039
South	ST-3506	Office	868	945	1487
South	ST-3507	Office	868	960	1510

## 36<sup>TH</sup> FLOOR

Unit No.	Type	Carpet Area (Sq.Ft.)	Built-Up Area (Sq.Ft.)	Super Built-Up Area (Sq.Ft.)	Terrace Area (Sq.ft.)
K-3601	Office	35365	36718	57760	

## 37<sup>TH</sup> FLOOR

Unit No.	Type	Carpet Area (Sq.Ft.)	Built-Up Area (Sq.Ft.)	Super Built-Up Area (Sq.Ft.)	Terrace Area (Sq.ft.)
K-3701	Office	29785	31138	48983	

## 38<sup>TH</sup> FLOOR

Unit No.	Type	Carpet Area (Sq.Ft.)	Built-Up Area (Sq.Ft.)	Super Built-Up Area (Sq.Ft.)	Terrace Area (Sq.ft.)
K-3801	Office	29785	31138	48983	

## 39<sup>TH</sup> FLOOR

Unit No.	Type	Carpet Area (Sq.Ft.)	Built-Up Area (Sq.Ft.)	Super Built-Up Area (Sq.Ft.)	Terrace Area (Sq.ft.)
HP-3901	Sky Lounge	10074	10653	19188	9969



9073 66 55 99

MODERN  
PROPERTIES











25 NS Road Kolkata 700001

[www.keventerrealty.com](http://www.keventerrealty.com)

**Disclaimer:**

The image, contents and visuals displayed in the brochure are merely conceptual and artistic impressions and purely indicative of the proposed development. This is not a legal offer/ advice/ representation/ inducement. The terms and conditions of transfer together with usage of service depicted here, if any, shall be subject to the necessary agreement between the Promoter and Allottee. The project is registered under The Real Estate (Regulation and Development) Act, 2016 with The West Bengal Real Estate Regulatory Authority and having its registration number RERA/P/KOL/2024/001378. More details are available at [www.rera.wb.gov.in](http://www.rera.wb.gov.in)



**9073 66 55 99**

**MODERN**  **RNN**  
PROPERTIES